




ATTACHMENT 10.3.1

**A Public Notice of Intention to Sell
Lot 2, PS821371K, 141 Lakins Road,
Mansfield**

**ATTACHMENT
(2 PAGES)**

PLAN UNDER SECTION 22 OF THE SUBDIVISION ACT 1988 PLAN OF SUBDIVISION		EDITION 1	PS821371K	
LOCATION OF LAND PARISH: MANSFIELD CROWN DESCRIPTION: CA. 40 TITLE REFERENCES: VOL. 9022 FOL. 665 LAST PLAN REFERENCE: LOT 40-D ON PP3056 POSTAL ADDRESS: 141 LAKINS ROAD MANSFIELD 3722 <small>(at time of subdivision)</small>		Council Name: Mansfield Shire Council SPEAR Reference Number: S121455B		
VESTING OF ROADS AND/OR RESERVES				
IDENTIFIER	COUNCIL/BODY/PERSON			
NIL	NIL			
NOTATIONS				
DEPTH LIMITATION:		Does Not Apply		
PLANNING PERMIT No.		P003/18		
SURVEY: This plan is based on survey.				
This is an ePlan				
PURPOSE OF PLAN: Removal of Caveat AK745207N				
GROUND FOR REMOVAL: By direction of SPI Electricity				
EASEMENT INFORMATION				
LEGEND: A-Appurtenant Easement E-Encumbering Easement				
Easement references shown with an asterisk(*) are compiled by SPEAR and do not appear in the ePlan data.				
IDENTIFIER	PURPOSE	WIDTH (m)	ORIGIN	LAND BENEFITED/IN FAVOUR OF
E1	Carriageway	15.34	This plan	Lot 1 on This Plan & SPI Electricity Pty Ltd SPI Electricity Pty Ltd SPI Electricity Pty Ltd SPI Electricity Pty Ltd
E2	Telecommunications	See Diagram	This plan	
E3, E6*	Telecommunications	1.0	This plan	
E4, E6*	Powerline	14.00	This Plan & Sec 88 Electricity Industry Act 2000	
E5	Carriageway	10	This plan	Lot 1 on This Plan
LAND MANAGEMENT SURVEYS (SHEPPARTON) P/L  <small>PLAN • SURVEY • ENGINEER</small> <small>Email: shepparton@landman.com.au</small>		8012 Goulburn Valley Hwy, Kialla (PO Box 415) Shepparton VIC 3632 Tel (03) 5821 9600	SURVEYORS FILE REF: 5294 Digitally signed by: Michael Alan Toll (Land Management Surveys (Shepparton) Pty Ltd), Surveyor's Plan Version (01), 08/06/2018, SPEAR Ref: S121455B	ORIGINAL SHEET SIZE: A3 SHEET 1 OF 2 <small>Plan generated date/time: 05/06/2018 07:45 AM</small>

LAKINS

ROAD

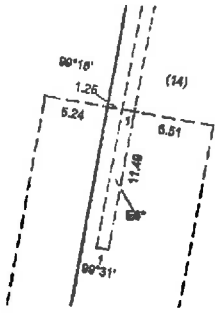
51

2
16.91ha

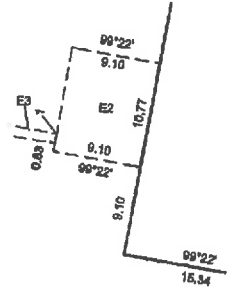
1
8.489ha

69

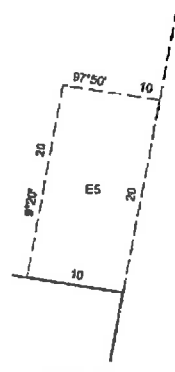
FORDS CREEK



SCALE 1:400



SCALE 1:500



SCALE 1:500

98°33'30" 399.42

8°49'30" 626.04

15.34

73°27'30" 131.84

50.44

97°50'10"

233.21

233.21

233.21

233.21

233.21

233.21

233.21

233.21

233.21

233.21

233.21

233.21

233.21

233.21

233.21

233.21

233.21

233.21

233.21

233.21

233.21

233.21

233.21

233.21

233.21

233.21

233.21

233.21

233.21

233.21

233.21

233.21

233.21

233.21

233.21

233.21

233.21

233.21

233.21

233.21

233.21

233.21

233.21

233.21

233.21

233.21

233.21

233.21

233.21

233.21

233.21



LAND MANAGEMENT SURVEYS
(SHEPPARTON) P/L

LMS

PLAN • SURVEY • ENGINEER
Email: shepparton@landma.com.au

8012 Goulburn Valley Hwy,
Kalla
(PO Box 416)
Shepparton VIC 3632
Tel (03) 5821 9600

SCALE 1 : 4000

LENGTHS ARE IN METRES

Digitally signed by: Michael Alan Toll (Land Management Surveys (Shepparton) Pty Ltd), Surveyor's Plan Version (01), 08/06/2018, SPEAR Ref: S121455B

ORIGINAL SHEET SIZE: A3

SHEET 2

Plan generated date/time: 05/06/2018 07:46 AM