

**GFL**  
SCALE 1 : 2000

### IMPORTANT NOTES:

- ANY TRADE NAME GIVEN IS NOT AN EXCLUSIVE REQUIREMENT. AN EQUIVALENT ALTERNATIVE PRODUCT OR SERVICE WILL BE CONSIDERED ONLY AFTER ARCHITECT'S APPROVAL.
- CONTRACTOR TO BEAR THE COST OF WATER, ELECTRICITY & TELEPHONE SERVICES USED DURING THE CONSTRUCTION, EITHER THROUGH SEPARATE SERVICES CONNECTIONS OR BY CHECK METERING PLACED ON CONNECTIONS INTO AV BUILDING SERVICES.
- CONTRACTOR IS RESPONSIBLE FOR RECORDING CONSUMPTION AND MAKING REIMBURSEMENT OF COSTS CONTRACTOR TO PROVIDE PROJECT SIGNAGE AS REQUIRED BY THE BUILDING REGULATIONS. GOVERNMENT SIGNBOARD IS NOT TO BE USED TO DISPLAY THE REGULATION INFORMATION.
- ARCHITECTURAL & SPECIALIST'S DOCUMENTATION & SPECIFICATION TAKE PRECEDENCE OVER THE SCHEDULE OF COST. ANY SCOPE OF WORKS DOCUMENTED IN DRAWINGS & SPECIFICATION MUST BE ALLOWED AS PART OF THE TENDER SUBMISSION.

### TRAFFIC MANAGEMENT NOTES:

- SIGNING LAYOUT USED DURING CONSTRUCTION WORKS IN DAYLIGHT HOURS.
- REPEATER SIGNS WILL BE PLACED THROUGH THE WORKPLACE AS REQUIRED (200m MAX).
- MAJOR SEALED SIDE ROAD AND GRAVEL SIDE ROADS TREATED WITH ROADWORK AHEAD, FOLLOWED BY 40km/ WORKER SYMBOL/ PREPARE TO STOP.
- WHEN EXISTING SPEED LIMIT APPLIES, SPEED LIMIT SIGNS WILL BE MODIFIED.
- FLAGS WILL BE DISPLAYED ON ALL SIGNS THAT HAVE REDUCE SPEED LIMIT.
- TRAFFIC CONTROLLERS TO USE A PORTABLE TWO WAY RADIOS IF LINE OF SIGHT IS OBSTRUCTED BETWEEN THE TRAFFIC CONTROLLERS.
- A 3m LANE WIDTH WILL BE MAINTAINED FOR SAFE PASSAGE THROUGH WORKSITE.
- WORK WILL BE UNDERTAKEN IN STAGES TO AVOID TRAFFIC DISRUPTION AND NOT CONGEST ALL LANES.
- QUEUE LENGTH SHALL BE MONITORED BY SITE FOREMAN. END OF QUEUE PROTECTION SHALL BE PROVIDED AS REQUIRED IN ACCORDANCE WITH AS 1742.3 2009 CLAUSE 4.7.8.

### PRIOR TO ONSITE WORKS NOTES:

- CONTRACTOR IS RESPONSIBLE FOR RECTIFYING ANY DAMAGED SERVICES FOUND
- IF STRUCTURAL RECTIFICATION OF FOOTINGS IS REQUIRED, CONTRACTOR MUST RECHECK ALL WATER SERVICES VIA CAMERA INVESTIGATION AFTER UNDERPINNING IS COMPLETED.
- CONTRACTOR IS RESPONSIBLE FOR RECTIFYING ANY DAMAGED SERVICES FOUND TO BE CAUSED BY THE DOCUMENTED WORKS

# AMBULANCE VICTORIA MANSFIELD STATION

166 HIGH STREET, MANSFIELD VIC  
3722

## DRAWING REGISTER

A000 GENERAL NOTES & DRAWING REGISTER  
A001 LOCALITY PLAN  
A002 PROPOSED GROUND FLOOR PLAN  
A003 SWEEP PATH ANALYSIS  
A004 SWEEP PATH ANALYSIS

### CONTRACTORS REPORTING OF SIGNIFICANT OH&S INCIDENTS

THE AMBULANCE VICTORIA (AV) REQUIRES THE MAIN BUILDING CONTRACTOR TO IMMEDIATELY NOTIFY DET INFRASTRUCTURE AND SUSTAINABILITY DIVISION, THE PROGRAM MANAGER, AND THE SUPERINTENDENT IF A SIGNIFICANT OH&S INCIDENT OCCURS ON THEIR CONSTRUCTION SITE. BY 'SIGNIFICANT' THIS MEANS:

- WORK COVER NOTIFIABLE INJURY TO PERSON(S) AND/OR DAMAGE TO AV'S PROPERTY (INCLUDING SERVICES) AS A RESULT OF A SITE WORKPLACE INCIDENT;
- ANY EVENT RELATED TO THE CONSTRUCTION WORKS WHICH REQUIRES THE EVACUATION OF THE BUILDING;
- ANY ACCIDENT INVOLVING A MAJOR ITEM OF CONSTRUCTION EQUIPMENT (EG: CRANE, HOIST, VEHICLE);
- COLLAPSE OF ANY BUILDING STRUCTURAL ELEMENT, EXCAVATION OR TEMPORARY SCAFFOLDING OR SHORING;
- INJURY TO ANY STAFF MEMBER OR VISITOR TO THE AV BUILDING DUE TO CONSTRUCTION WORKS; OR
- HAVING THE SITE CLOSED DOWN FOR OH&S REASONS BY WORKSAFE, FEDERAL GOVERNMENT INSPECTORS OR TRADE UNION REPRESENTATIVES. THE CONTRACTOR SHOULD ALSO CONTACT THE ARCHITECT 9348 9802.

### ASBESTOS REMOVAL ONLY IF REQUIRED

ALL CONTRACTORS ARE TO REFER TO THE FOLLOWING AUSTRALIAN STANDARDS FOR THE SAFE REMOVAL OF HAZARDOUS MATERIALS:

- OCCUPATIONAL HEALTH AND SAFETY ACT 2004 (OHS ACT)
- OCCUPATIONAL HEALTH AND SAFETY REGULATIONS 2007
- DANGEROUS GOODS ACT 1985 (SECTION 55), ORDER NO S 239 THE REMOVAL CERTAIN ASBESTOS AT WORKPLACES, 17 DECEMBER 2003
- NOHSC: 2018 (2005) CODE OF PRACTICE FOR THE MANAGEMENT AND CONTROL OF ASBESTOS IN WORKPLACES
- NOHSC: 2002 (2005) ASBESTOS CODE OF PRACTICE FOR THE SAFE REMOVAL OF ASBESTOS (NOHSC: 2002(2005)) 2ND EDITION
- NOHSC: 3003 (2005) GUIDANCE NOTE ON THE MEMBRANE FILTER METHOD FOR ESTIMATING AIRBORNE ASBESTOS FIBRES, 2ND EDITION
- CONTRACTOR TO UNDERTAKE A PART 6 ASBESTOS AUDIT
- ALL SOIL BEING BROUGHT ONTO A SCHOOL SITE MUST BE ACCOMPANIED BY A CLEARANCE CERTIFICATE/SOIL HYGIENE REPORT THAT HAS BEEN PREPARED BY A QUALIFIED INDEPENDENT OCCUPATIONAL HYGIENIST STATING THAT THE SOIL DOES NOT CONTAIN CONTAMINATED MATERIALS.
- CONTRACTORS MUST NOT TRANSPORT ANY CONTAMINATED FILL MATERIAL ONTO SCHOOL SITES, AND THE CLEARANCE CERTIFICATE/SOIL HYGIENE REPORT NEEDS TO BE PROVIDED BEFORE THE FILL IS BROUGHT TO SITE, INCLUDING TRANSPORTING FILL FROM DEVELOPERS, OR FROM COMMERCIAL COMPANIES WHO MAY HAVE CONTACTED SCHOOLS DIRECTLY TO SUPPLY FILL FROM OTHER SITES SUCH AS HOUSING ESTATE DEVELOPMENTS.
- THE VSBA AND ITS CONTRACTORS ARE NOT TO APPROVE THE ACQUISITION OF SOIL, MULCH, OR LOOSE FILL FROM SUPPLIERS UNABLE TO PROVIDE A VALID SOIL HYGIENE REPORT FOR REVIEW THAT CONFIRMS THE SAMPLED MATERIAL IS FREE OF ASBESTOS AND OTHER CONTAMINANTS.
- PLEASE REFER TO DEPARTMENT OF EDUCATION'S SOIL, MULCH OR LOOSE FILL POLICY.

This drawing and design is subject to copyright and may not be reproduced without prior written consent. All works shall conform to the specification and other relevant drawings. Figure dimensions to be taken in preference to scaled drawings.



**Project**  
AMBULANCE VICTORIA MANSFIELD STATION

**Project Address**  
166 HIGH STREET, MANSFIELD VIC 3722

© COPYRIGHT FOURSIGHT ARCHITECTS PTY. LTD.

**Date**  
JUN 2025

**Scale**  
1 : 2000

**Project No**  
025

**Drawing No**  
000

**Rev.**

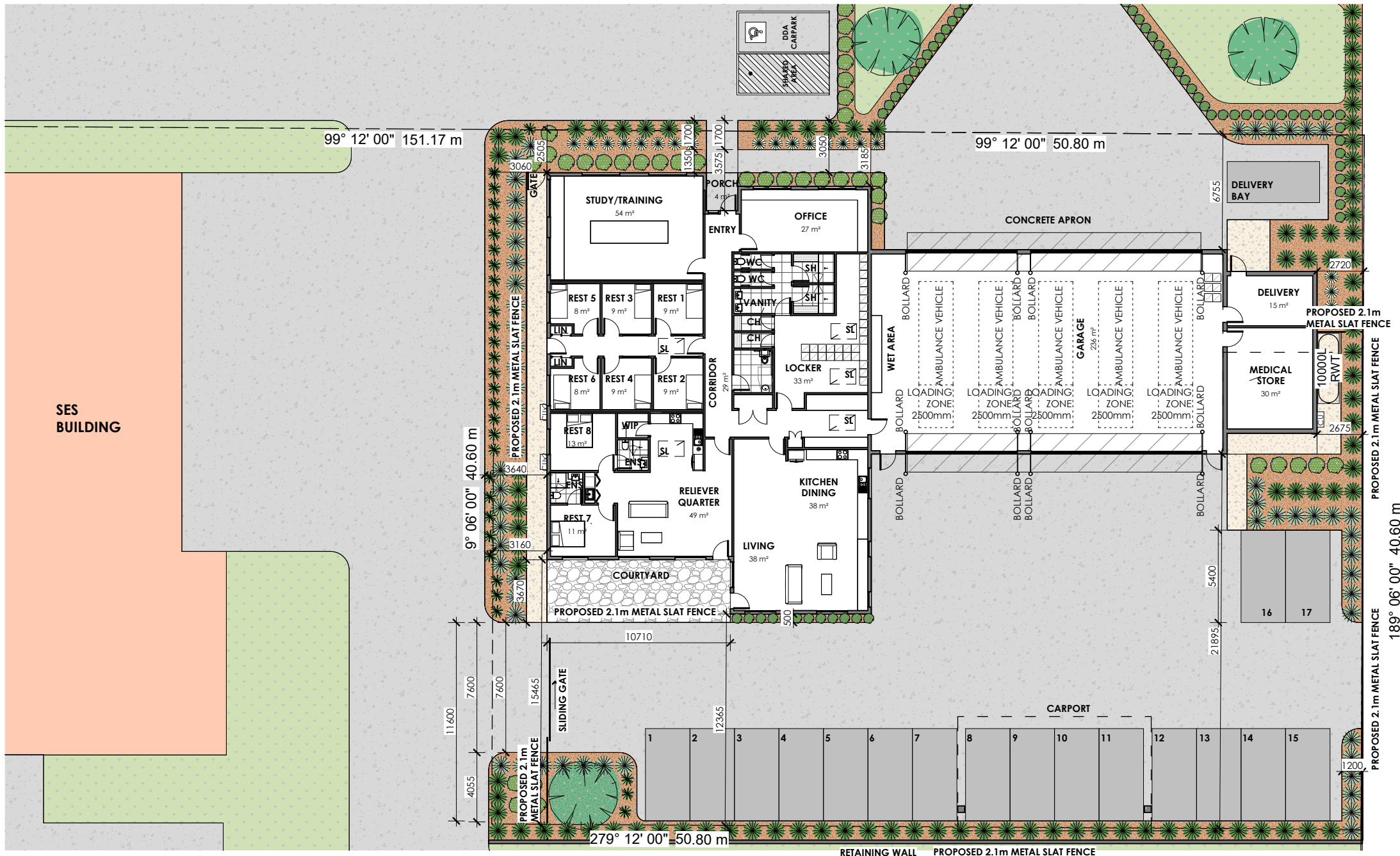
**fourSIGHT**

architects interiors landscape designers project managers

333 Queensberry street, North Melbourne Victoria 3051

p. (03) 934809802

office@fourarch.com.au



**LOCALITY PLAN**

SCALE 1 : 200

This drawing and design is subject to copyright and may not be reproduced without prior written consent. All works shall conform to the specification and other relevant drawings. Figure dimensions to be taken in preference to scaled drawings.



**Project**  
AMBULANCE VICTORIA MANSFIELD STATION

**Project Address**  
166 HIGH STREET, MANSFIELD VIC 3722

© COPYRIGHT FOURSIGHT ARCHITECTS PTY. LTD.

**Date**  
JUN 2025

**Scale**  
1 : 200

**Project No**  
025

**Drawing No**  
001

**Rev.**

**fourSIGHT**  
architects interiors landscape designers project managers  
333 Queensberry street, North Melbourne Victoria 3051  
p. (03) 934809802  
office@fourarch.com.au

# Area Schedule

CH	5 m <sup>2</sup>	4,950 \$/m <sup>2</sup>	\$23,801.8
CHARGING STATION	4 m <sup>2</sup>	4,950 \$/m <sup>2</sup>	\$17,373.7
COMMS	2 m <sup>2</sup>	4,950 \$/m <sup>2</sup>	\$10,589.9
CORRIDOR	48 m <sup>2</sup>	4,950 \$/m <sup>2</sup>	\$239,844.6
DDA	6 m <sup>2</sup>	4,950 \$/m <sup>2</sup>	\$31,004.3
DELIVERY	18 m <sup>2</sup>	4,950 \$/m <sup>2</sup>	\$88,072.9
ENS	8 m <sup>2</sup>	4,950 \$/m <sup>2</sup>	\$38,338.0
GARAGE	247 m <sup>2</sup>	3,300 \$/m <sup>2</sup>	\$815,344.1
KITCHEN & DINING LIVING	81 m <sup>2</sup>	4,950 \$/m <sup>2</sup>	\$399,270.7
L'DRY	1 m <sup>2</sup>	4,950 \$/m <sup>2</sup>	\$6,712.7
LOCKERS	35 m <sup>2</sup>	4,950 \$/m <sup>2</sup>	\$174,182.7
MEDICAL STORE	34 m <sup>2</sup>	4,950 \$/m <sup>2</sup>	\$170,033.7
PEGION HOLE	2 m <sup>2</sup>	4,950 \$/m <sup>2</sup>	\$11,771.9
PORCH	5 m <sup>2</sup>	4,950 \$/m <sup>2</sup>	\$23,809.9
RELIEVER QUARTER	52 m <sup>2</sup>	4,950 \$/m <sup>2</sup>	\$256,758.3
REST 1	9 m <sup>2</sup>	4,950 \$/m <sup>2</sup>	\$46,363.4
REST 2	10 m <sup>2</sup>	4,950 \$/m <sup>2</sup>	\$47,418.0
REST 3	9 m <sup>2</sup>	4,950 \$/m <sup>2</sup>	\$46,363.4
REST 4	10 m <sup>2</sup>	4,950 \$/m <sup>2</sup>	\$47,418.0
REST 5	10 m <sup>2</sup>	4,950 \$/m <sup>2</sup>	\$48,576.8
REST 6	10 m <sup>2</sup>	4,950 \$/m <sup>2</sup>	\$49,702.3
REST 7	13 m <sup>2</sup>	4,950 \$/m <sup>2</sup>	\$65,496.3
REST 8	14 m <sup>2</sup>	4,950 \$/m <sup>2</sup>	\$70,439.4
SB	1 m <sup>2</sup>	4,950 \$/m <sup>2</sup>	\$2,951.1
SH	9 m <sup>2</sup>	4,950 \$/m <sup>2</sup>	\$43,748.1
TEAM OFFICE	30 m <sup>2</sup>	4,950 \$/m <sup>2</sup>	\$146,994.5
TRAINING/STUDY	59 m <sup>2</sup>	4,950 \$/m <sup>2</sup>	\$290,274.6
VANITY	8 m <sup>2</sup>	4,950 \$/m <sup>2</sup>	\$38,219.2
WC	5 m <sup>2</sup>	4,950 \$/m <sup>2</sup>	\$23,801.8
WIP	3 m <sup>2</sup>	4,950 \$/m <sup>2</sup>	\$15,038.9

Gross Building Area: 36	747 m <sup>2</sup>		\$3,289,735.0
CARPOR	68 m <sup>2</sup>	440 \$/m <sup>2</sup>	\$29,719.5
CONCRETE APRON	163 m <sup>2</sup>	110 \$/m <sup>2</sup>	\$17,885.4
CONCRETE DRIVEWAY	726 m <sup>2</sup>	110 \$/m <sup>2</sup>	\$79,841.8
CONCRETE PATHWAY	16 m <sup>2</sup>	110 \$/m <sup>2</sup>	\$1,763.8
PERMEABLE AREA	26 m <sup>2</sup>	110 \$/m <sup>2</sup>	\$2,874.7
POS	274 m <sup>2</sup>	110 \$/m <sup>2</sup>	\$30,110.0
SPOS	44 m <sup>2</sup>	110 \$/m <sup>2</sup>	\$4,808.5
Exterior Area: 15	1316 m <sup>2</sup>		\$167,003.6
Grand total: 51	2063 m <sup>2</sup>		\$3,456,738.6



This drawing and design is subject to copyright and may not be reproduced without prior written consent. All works shall conform to the specification and other relevant drawings. Figure dimensions to be taken in preference to scaled drawings.



**Project**  
AMBULANCE VICTORIA MANSFIELD STATION

**Project Address**  
166 HIGH STREET, MANSFIELD VIC 3722

© COPYRIGHT FOURSIGHT ARCHITECTS PTY. LTD.

**Date**  
JUN 2025

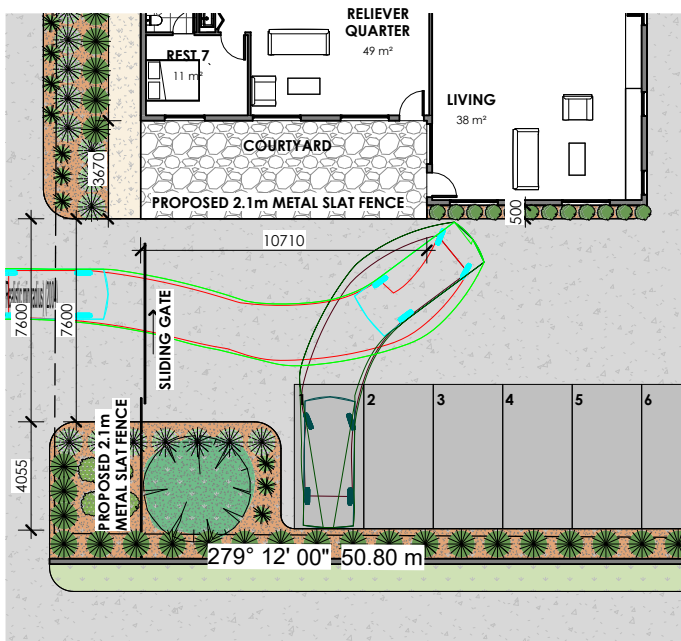
**Project No**  
025

**Scale**  
1 : 150

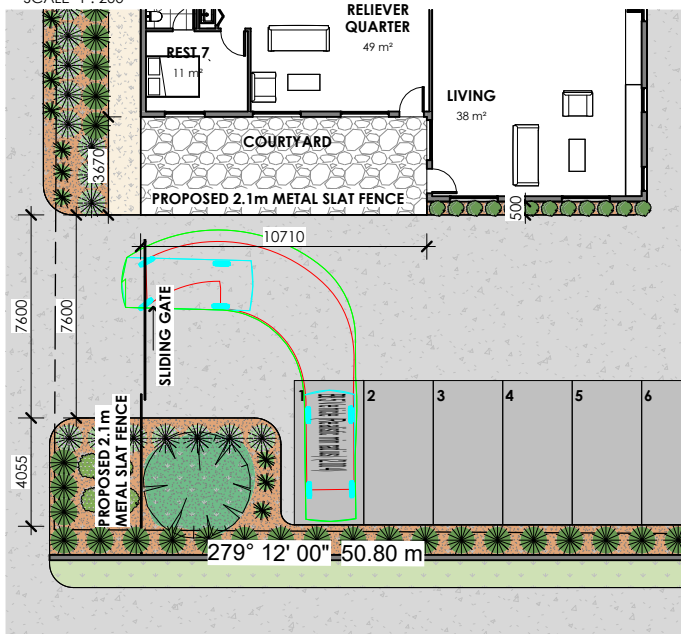
**Drawing No**  
002

**Rev.**

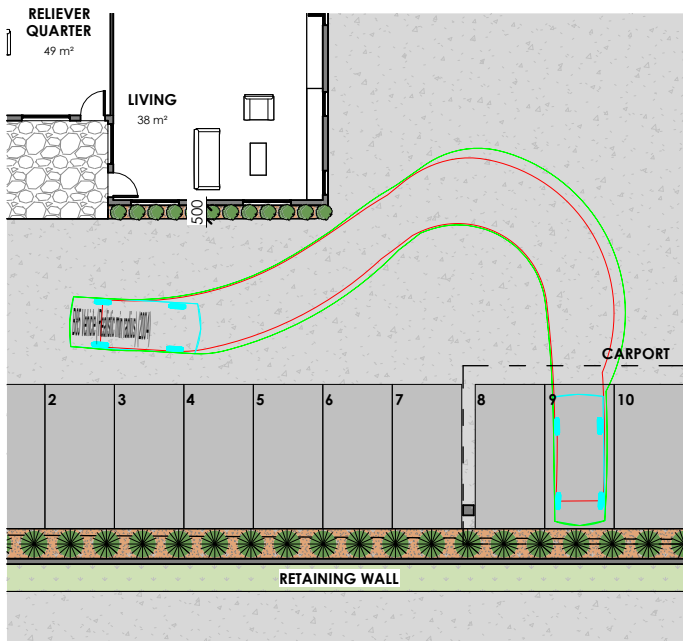
**fourSIGHT**  
architects interiors landscape designers project managers  
333 Queensberry street, North Melbourne Victoria 3051  
p. (03) 934809802  
office@fourarch.com.au



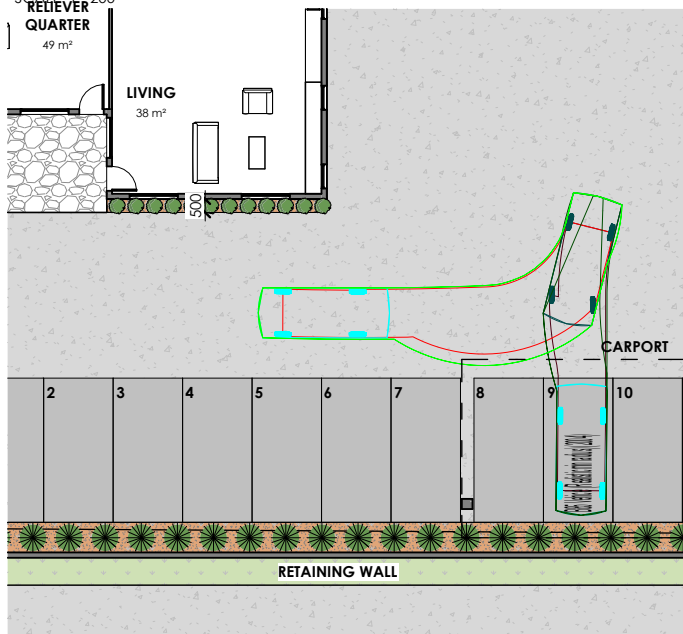
**CAR ENTRY**  
SCALE 1 : 200



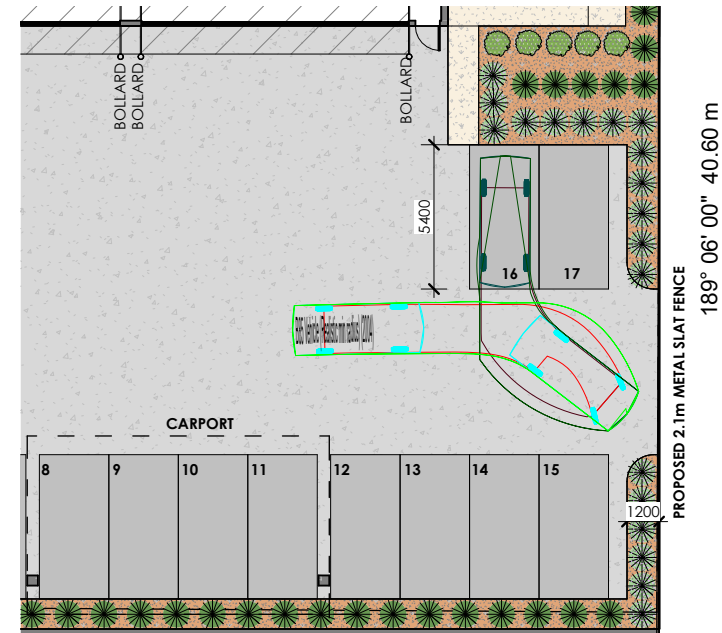
**CAR EXIT**  
SCALE 1 : 200



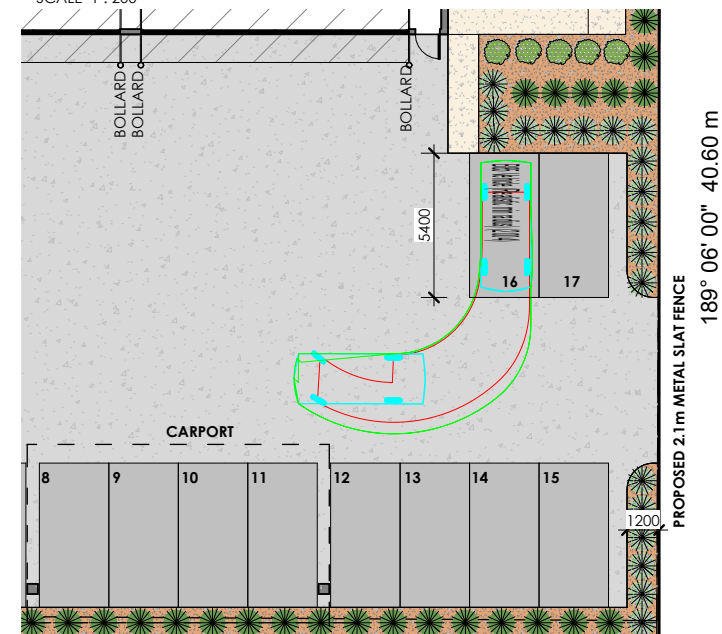
**CARPORT ENTRY**  
SCALE 1 : 200



**CARPORT EXIT**  
SCALE 1 : 200



**16 CAR ENTRY**  
SCALE 1 : 200



**16 CAR EXIT**  
SCALE 1 : 200

This drawing and design is subject to copyright and may not be reproduced without prior written consent. All works shall conform to the specification and other relevant drawings. Figure dimensions to be taken in preference to scaled drawings.



**Project**  
AMBULANCE VICTORIA MANSFIELD STATION

**Project Address**  
166 HIGH STREET, MANSFIELD VIC 3722

© COPYRIGHT FOURSIGHT ARCHITECTS PTY. LTD.

**Date**  
JUN 2025

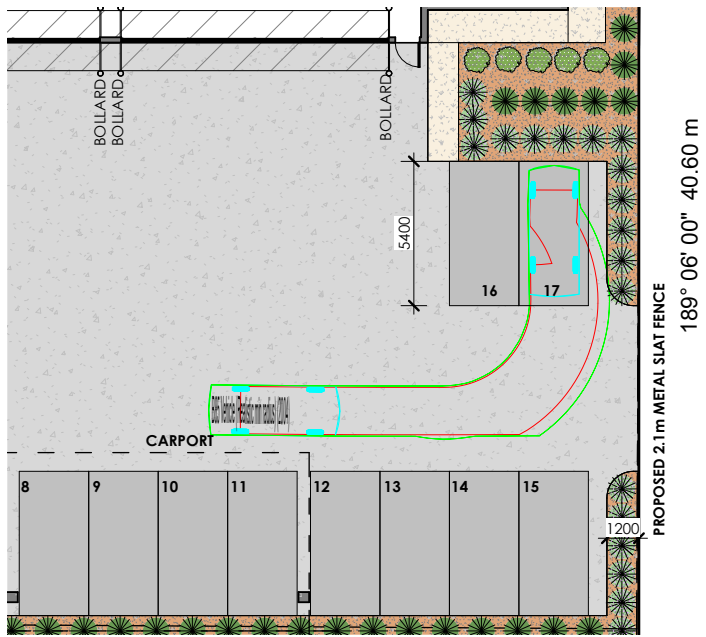
**Project No**  
025

**Scale**  
1 : 200

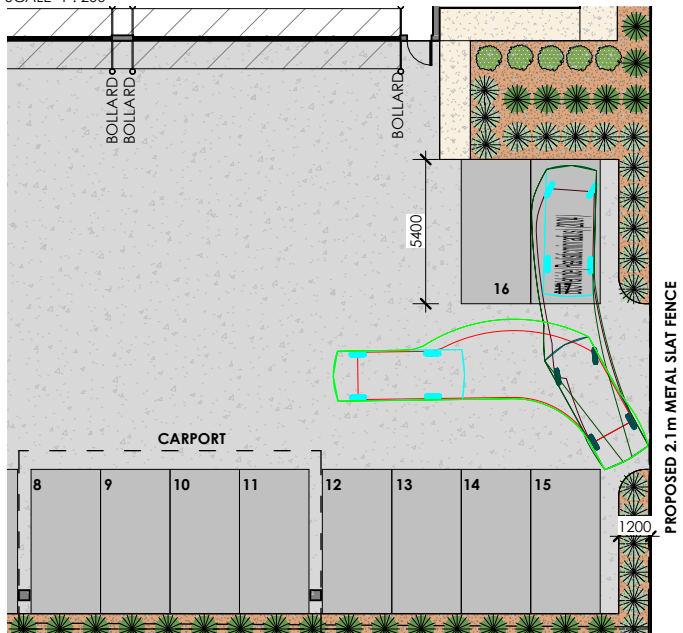
**Drawing No**  
003

**Rev.**

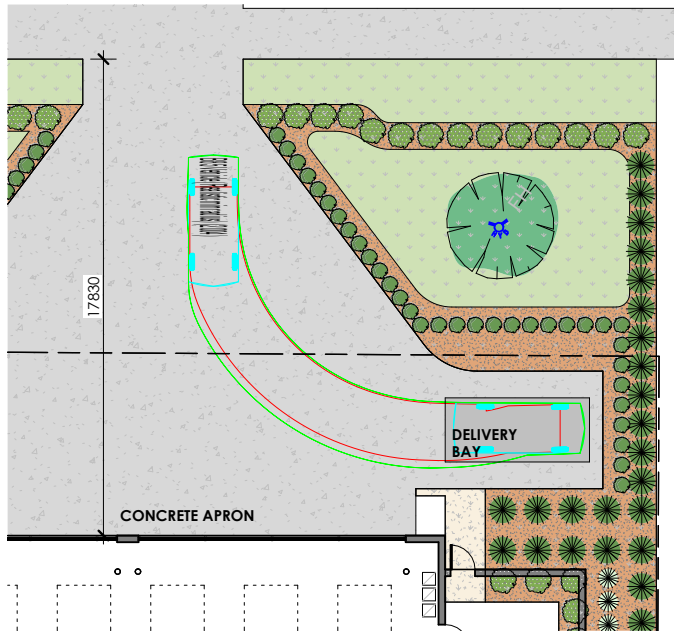
**fourSIGHT**  
architects interiors landscape designers project managers  
333 Queensberry street, North Melbourne Victoria 3051  
p. (03) 934809802  
office@fourarch.com.au



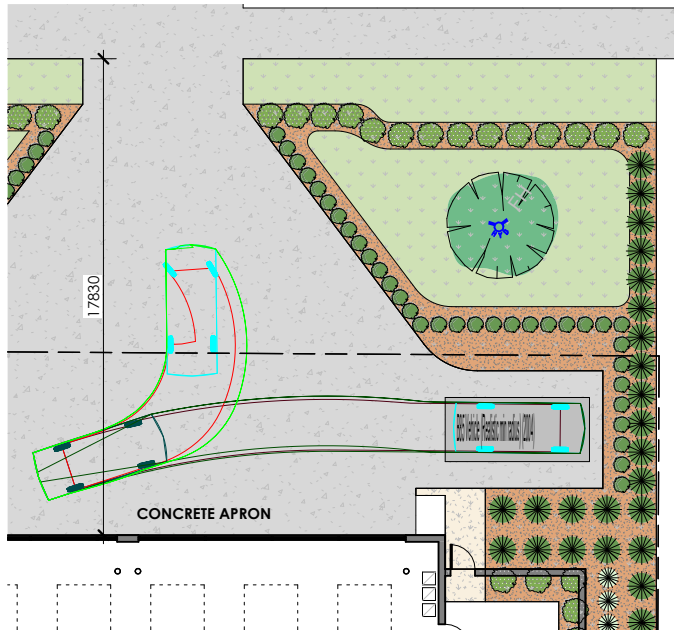
**17 CAR ENTRY**  
SCALE 1 : 200



**17 CAR EXIT**  
SCALE 1 : 200



**DELIVERY CAR ENTRY**  
SCALE 1 : 200



**DELIVERY CAR EXIT**  
SCALE 1 : 200

189° 06' 00" 40.60 m

PROPOSED 2.1m METAL SLAT FENCE

PROPOSED 2.1m METAL SLAT FENCE

This drawing and design is subject to copyright and may not be reproduced without prior written consent. All works shall conform to the specification and other relevant drawings. Figure dimensions to be taken in preference to scaled drawings.



**Project**  
AMBULANCE VICTORIA MANSFIELD STATION

**Project Address**  
166 HIGH STREET, MANSFIELD VIC 3722

© COPYRIGHT FOURSIGHT ARCHITECTS PTY. LTD.

**Date**  
JUN 2025

**Project**  
No 025

**Scale**  
1 : 200

**Drawing**  
No 04

**Rev.**

**fourSIGHT**

architects interiors landscape designers project managers  
333 Queensberry street, North Melbourne Victoria 3051  
p. (03) 934809802  
office@fourarch.com.au