

MANSFIELD

OPEN

SPACE

STRATEGY

Open Space Strategy

January 2023

REALM studios

Contents

1.0 Introduction

- 1.1 Open space in Mansfield
- 1.2 Why is open space important?

2.0 Current Situation

- 2.1 Existing provision
- 2.2 Population and participation changes
- 2.3 Key issues arising

3.0 Guiding Principles

- 3.1 Overall
- 3.2 Improving the quality of open space
- 3.3 Expanding the open space network
- 3.4 Improving the active recreation of open space
- 3.5 Improving the climate resilience and sustainability of open space
- 3.6 Celebrating the cultural landscape in open space
- 3.7 Supporting open space as a regional asset

4.0 Implementation Framework

Project: Mansfield Open Space Strategy
Authors: Alaric Hellawell
Watkin McLennan

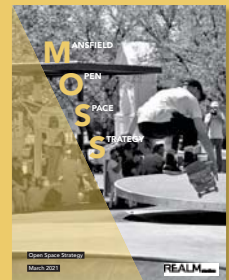
Client: Mansfield Shire Council
Date: December 2020
Revision: C (May 2021)

Prepared by: **REALM**studios

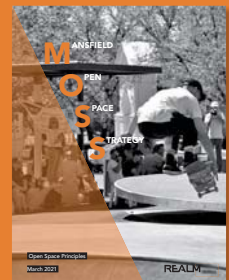
Preliminary report Whole of Shire



Open Space Principles Whole of Shire



Open Space Strategy Mansfield Township only



Implementation and Contributions Plan Mansfield Township only





1.0 Introduction

1.1 OPEN SPACE IN MANSFIELD

Mansfield is a historic township developed around a network of creeks, paddocks and forested areas which provide a significant range of open space and natural areas to accommodate the community's needs.

While this relative abundance of open space provides significant opportunities for a range of formal and informal recreation activities and environmental outcomes, Council requires an overarching strategic document to guide future management priorities and directions, including open space contributions.

The aim of the Open Space Strategy is to establish a strategic vision and policy directions to guide the future planning, provision and management of open space across the township over the next 20 years (2021-2040).

The Open Space Strategy is based on a preliminary analysis report, community consultation and six open space principles that are documented in more detail in the Open Space Principles Report.

For the purposes of this strategy open space has been defined as publicly owned land that is set aside primarily for recreation, nature conservation, passive outdoor enjoyment and public gatherings. This includes public parks, gardens, reserves and waterways.

Whilst the Open Space Strategy primarily relates to Council owned or managed public open space reserves, it is acknowledged that the Shire is well serviced by a range of ancillary (or restricted) open spaces and State Parks. This includes large areas of land set aside for protection of natural resources and the conservation of historic features. While this

land offers a range of passive and active recreation opportunities and supports a significant trail network, the responsibility for the land is predominantly that of State Government (i.e. the Department of Energy, Environment and Climate Action (DEECA) and/or Parks Victoria (PV). These reserves contribute to the overall suite of Shire open space available to the community however their management is not included in the scope of this plan which focuses on the Mansfield Township.



Figure 1.1: The path along Ford Creek in the Mansfield Botanic Park

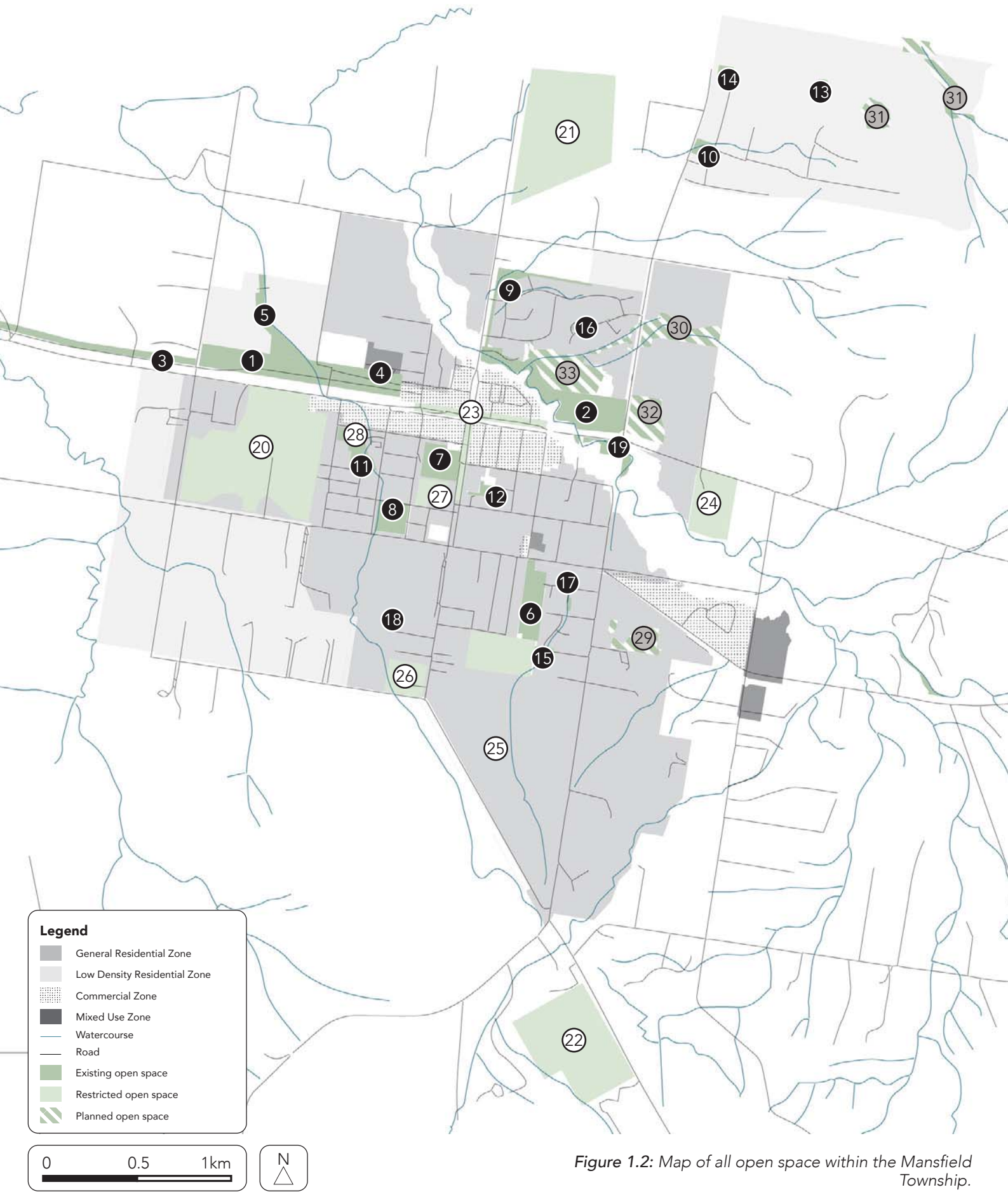


Figure 1.2: Map of all open space within the Mansfield Township.



	LOCATION	AREA (HA)	CATCHMENT	CHARACTER	FUNCTION
PUBLIC OPEN SPACE					
1	Mullum Wetlands	17.06	Regional	Waterway/Creek/River corridor	Flora/fauna conservation
2	Mansfield Botanic Park	10.85	Regional	Open grassy	Social/ family recreation
3	The Great Victorian Rail Trail	7.2	Regional	Native grassland	Access trail
4	The Station Precinct	4.82	District	Open grassy	Social/ family recreation
5	Stockman's Rise Drainage Reserve	4.24	District	Open grassy	Passive recreation
6	Additional Playing Fields	4.12	District	Specialised sport	Sport
7	Mansfield Recreation Reserve	3.00	District	Specialised sport	Sport
8	Lords Reserve	2.60	District	Specialised sport	Sport
9	Midland Highway Drainage Reserve and Basin	1.59	District	Waterway/Creek/River corridor	Detention Basin
10	Oaksford Drive detention basin	1.13	District	Open grassy	Detention Basin
11	Cummins Reserve (Tennis Centre and waterway)	1.71	District	Open grassy	Passive recreation
12	Davies Street Reserve	0.86	Local	Open grassy	Passive recreation
13	Grange Estate Playground	0.8	Local	Open grassy	Social/ family recreation
14	Grange Estate Stormwater Basin	0.74	Local	Open grassy	Detention Basin
15	Stewart Street Stormwater Basin	0.41	Local	Open grassy	Detention Basin
16	Red Gum Estate tree protection Reserves	0.15	Local	Native grassland	Flora/fauna conservation
17	Mitchell Court Drainage Reserve	0.09	Local	Open grassy	Passive recreation
18	Peak Court Reserve	0.08	Local	Open grassy	Passive recreation
19	Fords Creek Path	0.06	Local	Waterway/Creek/River corridor	Access trail
RESTRICTED OPEN SPACE					
20	Golf Course	34.28		Open grassy	Sport
21	Racecourse	24.2		Open grassy	Sport/ Equestrian
22	Rifle Butts Reserve	21.8		Open grassy	Sport
23	High/Highett Streets Center Median	7.31		Open grassy	Social/ family recreation
24	Showground	6.38		Open grassy	Social/ Equestrian
25	Mansfield Secondary College	6.08		Open grassy	Social/ family recreation
26	Cemetery	2.14		Open grassy	Social/ family recreation
27	Mansfield Primary School	1.18		Open grassy	Social/ family recreation
28	Cummins Reserve Tennis Centre	0.84		Open grassy	Sport
RESTRICTED OPEN SPACE APPROVED DEVELOPMENT					
29	26 Highton Lane				
30	Redgum Rise Estate				
31	Donovans Way				
32	Mount Battery Road				
33	Mansfield Botanic Park Extension				

Figure 1.3: Table of all open space within the Mansfield Township.

1.2 WHY IS OPEN SPACE IMPORTANT?

Providing quality public open space has many benefits. Open spaces facilitate increased levels of participation in physical activity and social interactions, both of which is strongly aligned to health and wellbeing benefits. Open spaces contribute to the character and amenity of townships, increase liveability and support environmental outcomes. These include biodiversity and natural area protection, enhance ecological corridors and systems, support effective waterway management, contribute to air quality and management of greenhouse gas impacts, provide habitat - as well as supporting economic development opportunities and tourism activity. Open spaces are highly valued for their contribution to heritage protection and cultural values. These benefits were acknowledged in a recent report by the Victorian Environmental Assessment Council (VEAC)¹ which identified that public open space contributes to:

- Physical health - by providing opportunities for physical activity and children's play in parks, sportsgrounds, playgrounds and along walking and cycling paths.
- Mental health - by providing opportunities to undertake informal activities such as relaxing and being in natural environments.
- Social capital and community connections - by providing opportunities for group gatherings (such as picnics and barbecues), socialising and meeting new people and integrating new community members in parks, playgrounds and sports venues.
- Stimulated and sustainable economies - by providing a venue for a variety of community, tourism and commercial activities, which in turn generate employment.
- Environmentally sustainable urban areas - through the protection of nature values in parks, provision of ecosystem services and reduction in the urban heat island effect.
- Artistic expression and cultural diversity through the provision of venues for community, sporting and cultural events and festivals in city squares and promenades, parks and sportsgrounds, which contribute to the diversity and liveliness of urban areas.



Figure 1.4: Looking north from the Grange Estate



2.0 Current Situation

2.1 EXISTING PROVISION

Mansfield Township has significant provision of open space through existing Council assets and surrounding regional parks. Township assets are strongly aligned to participation trends, particularly walking and mountain bike cycling. The Township has approximately 77.75 hectares (ha) of Council owned or managed public open space spread across 19 individual sites, which equates to approximately 129 square meters per person (based on the township population of 4,787 people, 2016). This is a high level of provision which is further enhanced by close access to a number of State and Regional Parks. Direct comparisons with other municipalities are not readily available, however as an example, metropolitan Melbourne council's average between 5ha - 10ha of public open space per 1,000 people.

Across the township there is 61.58ha of public open space owned and/or managed by Council. An additional 104.22ha of restricted open space (for example the showground and public school playing field) play an open space role but are not considered public open space for the purposes of this report.

There is a good balance of public open space sites in all categories and types across the Township, however there is a relatively high amount of undeveloped public open space reserves (i.e. 12 sites of 19 or 54% of total public open space land area). This suggests that the majority are small and have limited public performance or value. This points to an opportunity for Council to review these existing assets in order to determine priorities for possible enhancement or potential rationalisation if assessed as surplus to requirements.

38.15ha of public open space is encumbered (62%) which restricts the level of development for each encumbered site. This reduces each site's programming output, and in turn puts pressure on the remaining public open spaces to try to achieve the desired level of amenity and programming for the township.

There are 3 waterway public open spaces sites. These account for the largest proportion of total hectares (i.e. approximately 30% or 18.83 ha). Whilst this reflects the geography of the area, specifically Ford Creek which winds its way through the township, it also highlights the scale of the challenge facing Council to sustainably manage these resources and the ability to provide unencumbered public open space.

Conservation & environment open space make up 26.18ha of the public open space (42% of total open space land area). Sport sites account for 17% of total public open space (3 individual sites) at 10.57 ha in total. Council will need to continue to balance demands for investment in formal sport, informal recreation, conservation and environmental outcomes such as drainage in the management of open space.

2.2 POPULATION & PARTICIPATION CHANGES

The size, scale and rate of population change is one of the key factors influencing the current and future demand for open space in the Township. In 2016, the Shire had a population of 8,400. While the population is small, it is growing. Driven by its proximity to Melbourne and its attractive lifestyle offering, the population of the Shire has risen from approximately 6,600 in 2006 and is expected to further increase to almost 11,000 by 2036. This pace of growth is expected to be higher than that for regional Victoria to 2026 (at about 1.2 to 1.6 percent on average per year) but will slow to 2036 as total population increases.

This growth however is not expected to significantly increase demand for new/additional public open space, therefore, aside from ensuring adequate accessibility to quality local open space (i.e. walkability objectives and connections), the focus should be on improving existing public open space in order to enhance its capacity, amenity and appeal.

2.3 KEY ISSUES ARISING

Some of the key issues arising as a result of the site assessments, consultation outcomes, research, distribution analysis and consideration of forecast change include:

- Gaps in the provision of open space, meaning there are parts of the Township where people cannot easily and safely walk to open space.
- Forecast development growth and change is significant in some parts of the Township. There is a need to proactively plan for this change to ensure public open space positively contributes to the sense of place and community health and wellbeing as the Township develops.
- The lack of connectivity between established urban areas and the existing linear paths and open space corridors along the waterways.
- The impact of drainage encumbrance on the accessibility, quality and useability of open space.
- The variability in the design, quality and condition of open space which effects the use and access to open space.
- Impacts of the forecast increased frequency of more extreme weather patterns on open space design and management.



Figure 2.1: Mitchell Court Drainage Reserve



Figure 2.2: Ford Creek Trail



Figure 2.3: The Station Precinct



3.0 Guiding Principles

The following guiding principles have been developed to support the open space vision and to underpin Council's involvement in open space planning, provision and management.

The Strategy addresses the open space needs of both the existing and the forecast development as an integrated framework that includes:

- Where additional open space is needed and the type of open space required.
- Improvements to the existing open space reserves.
- Design and management guidelines for both existing and proposed open space.
- The supporting justification for a fair and equitable open space contribution program that Council will incorporate, with appropriate policy directions, into the Planning Scheme.

Six Guiding Principles

3.1 High quality of open space

Open space should be of high quality to gain the maximum benefits from limited resources. Land encumbered by drainage lines and drainage assets will not be considered for open space contributions.

3.2 Open space close to home

Open space should be within close walking and/or biking distance for all residents.

3.3 Active open space

Open space should promote active and healthy lifestyles.

3.4 Climate resilience and sustainable open space

Open space should be able to perform in a changing climate.

3.5 Open space as a part of Cultural Landscape

Open space should reflect and strengthen the rich cultural heritage of the Shire.

3.6 Open space as a regional asset

Open space should utilize the natural landscape assets of the Shire to support happiness and a growing economy.

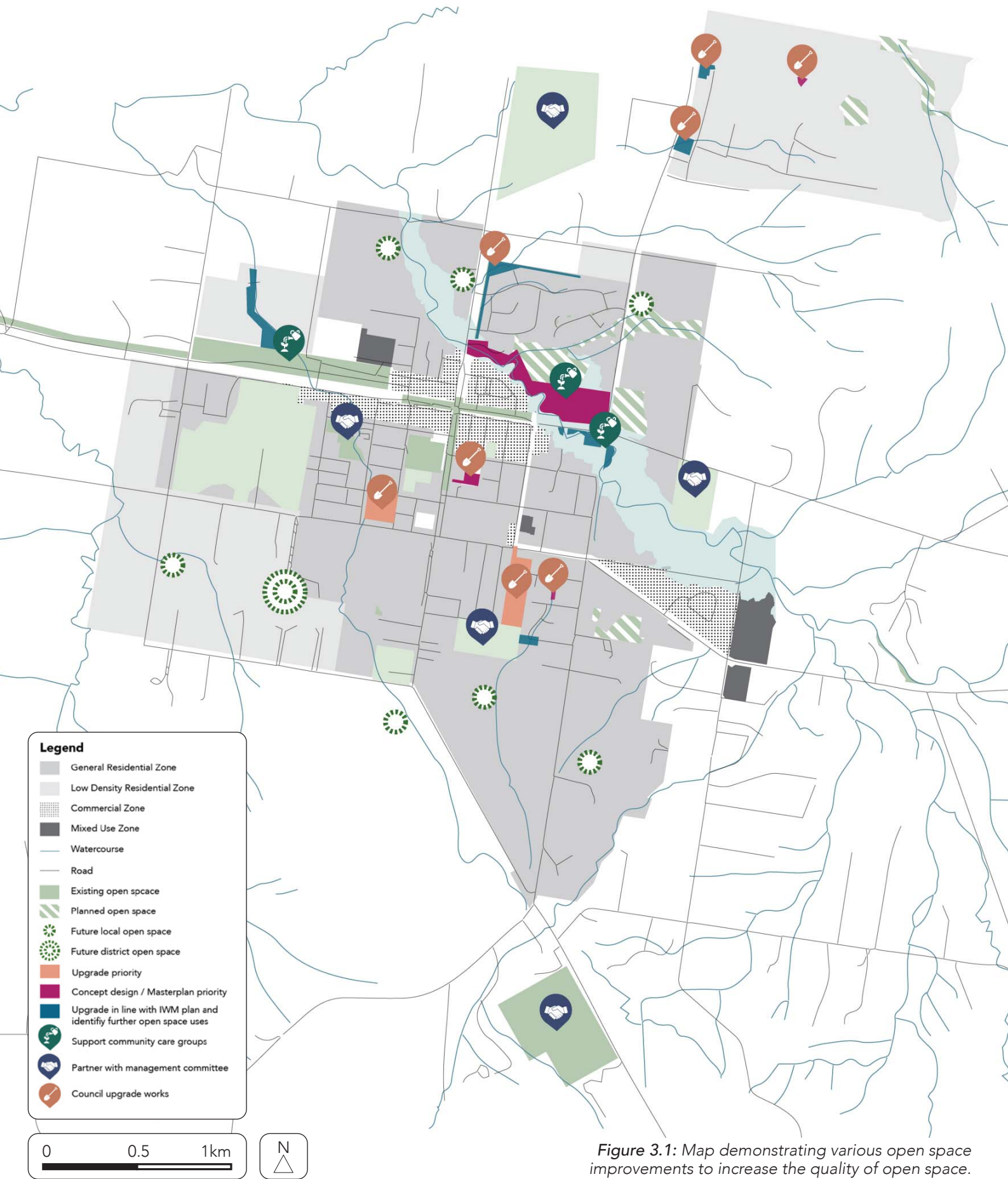


Figure 3.1: Map demonstrating various open space improvements to increase the quality of open space.



3.1 IMPROVING THE QUALITY OF OPEN SPACE

There is increasing evidence that the quality of open space significantly contributes to community satisfaction and well-being independent of the quantity of open space*. A range of improvements and upgrades to the existing open space network are proposed as part of this Strategy. This includes improvements to more than 14 existing open spaces through to 2040. The improvements are informed by:

- Site assessment of the existing open space.
- The extent and intensity of forecast change and growth in the catchment.
- Analysis of the impact of the forecast growth on the existing and future open space network.
- Current best practice research into open space planning including provision and design, particularly in relation to community health and well-being and climate change.

Some existing open spaces do not require any specific upgrade works and these will continue to receive ongoing maintenance and renewal work.

*QUALITY OVER QUANTITY: CONTRIBUTION OF URBAN GREEN SPACE TO NEIGHBORHOOD SATISFACTION. INT J ENVIRON RES PUBLIC HEALTH. 2017 MAY



ACTIONS

- 3.1.1 Prepare and implement landscape master plans for all current Regional Open Space.
- 3.1.2 Prepare and implement landscape concept plans for Davies Street Reserve, Cummins Reserve Waterway, Mitchell Court Drainage Reserve and Grange Estate Playground.
- 3.1.3 Partner with management committees of Rifle Butts Reserve, Mansfield Tennis Centre, Mansfield Showgrounds, Mansfield Secondary College, Department of Energy, Environment and Climate Action (DEECA) and Mansfield Racecourse to explore opportunities for improved access and use of open space by the broader community.
- 3.1.4 Support community groups who contribute to the maintenance of Fords Creek, Mansfield Botanic Park and Mullum Wetlands.
- 3.1.5 Upgrade open space facilities for Lords Reserve, Additional Playing Fields, Grange Estate Stormwater Basin, Midland Highway Drainage Reserve, Oaksford Drive Detention Basin.
- 3.1.6 Improve pedestrian and vehicular access and circulation within Mansfield Recreation Reserve.
- 3.1.7 Support the delivery of the Mansfield Station. Precinct Activation Project.

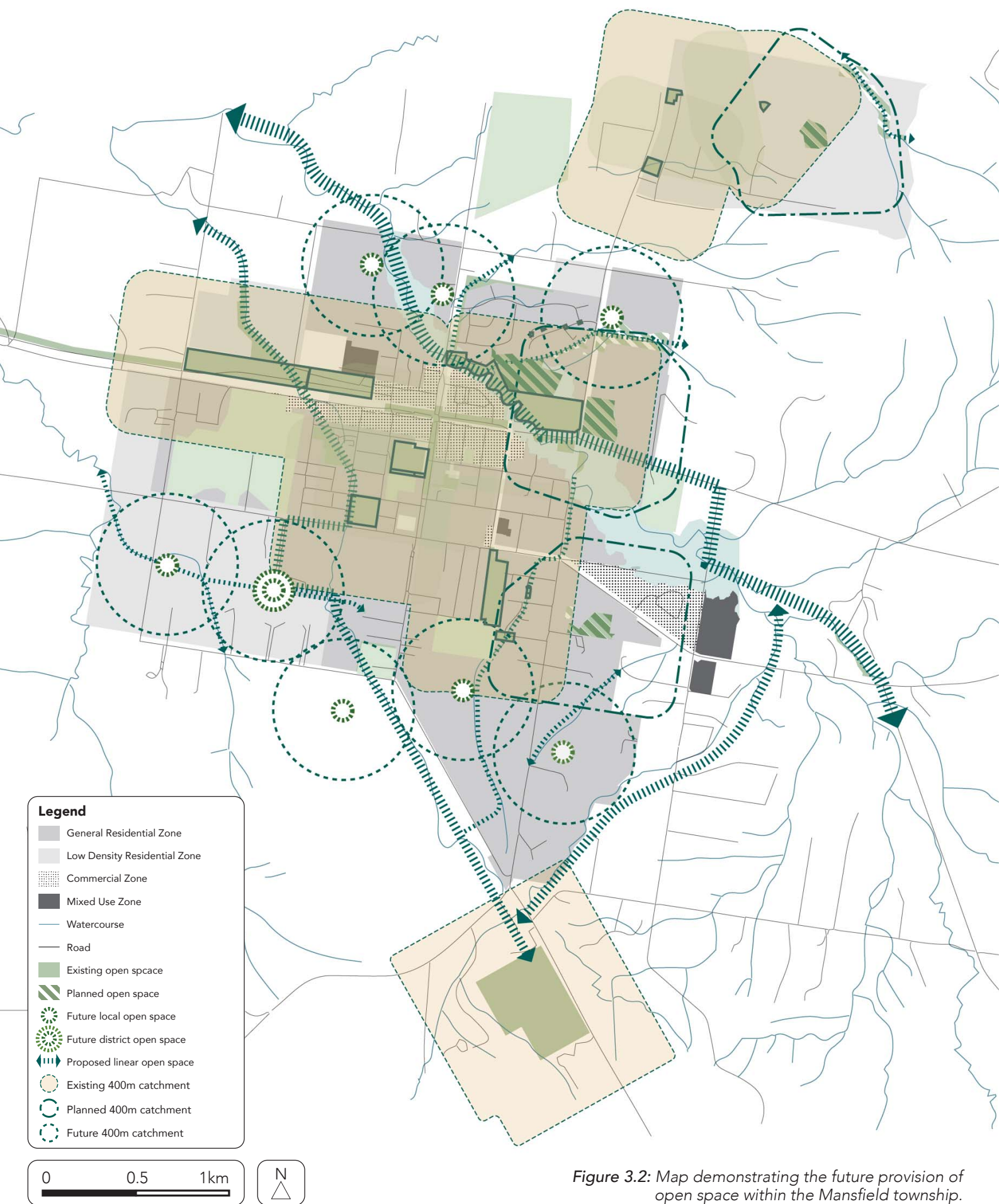


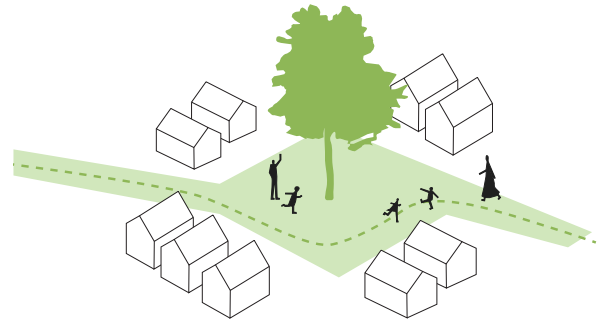
Figure 3.2: Map demonstrating the future provision of open space within the Mansfield township.



3.2 EXPANDING THE OPEN SPACE NETWORK

As the Mansfield Township changes through to 2040, new open space will be added to the network. These new open spaces are for a combination of the existing and forecast population. Where they are primarily for the forecast population, the timing for their delivery will depend on the rate of development. The expansion of the open space network has been informed by:

- Classification of open space by typology - local, district and regional.
- Walking catchment modelling to understand the gaps in open space.
- The extent and intensity of forecast change and growth in the catchment.



ACTIONS

- 3.2.1 Provide seven new local open spaces to meet the health and well being needs of the community as the township grows. This will put 95% of all future dwellings within a 400m safe walk of a local open space.
- 3.2.2 Provide Two new district open spaces to meet the unstructured recreation needs of the existing and forecast population within a 1km safe walk of at least 95% of all dwellings. One of these district open spaces will be located at 26 Highton Lane
- 3.2.3 Mansfield Botanic Park to be expanded to the north to include unencumbered and encumbered open space from adjoining subdivision development.
- 3.2.4 Establish continuous open space corridors along creek lines and drainage lines. Specific corridors include; from Rifle Butts Reserve to Dead Horse Lane, from Mansfield-Woods Point Road to Dead Horse Lane along Ford Creek and minor corridors as indicated on the plan opposite (Figure 3.2).
- 3.2.5 Co-locate public open space and encumbered land to provide co-benefits including drainage assets, significant tree protection zones, biodiversity protection, and native habitat areas and bushfire protection in accordance with the *Settlement Planning at the Bushfire Interface Design Guidelines*, July 2020.

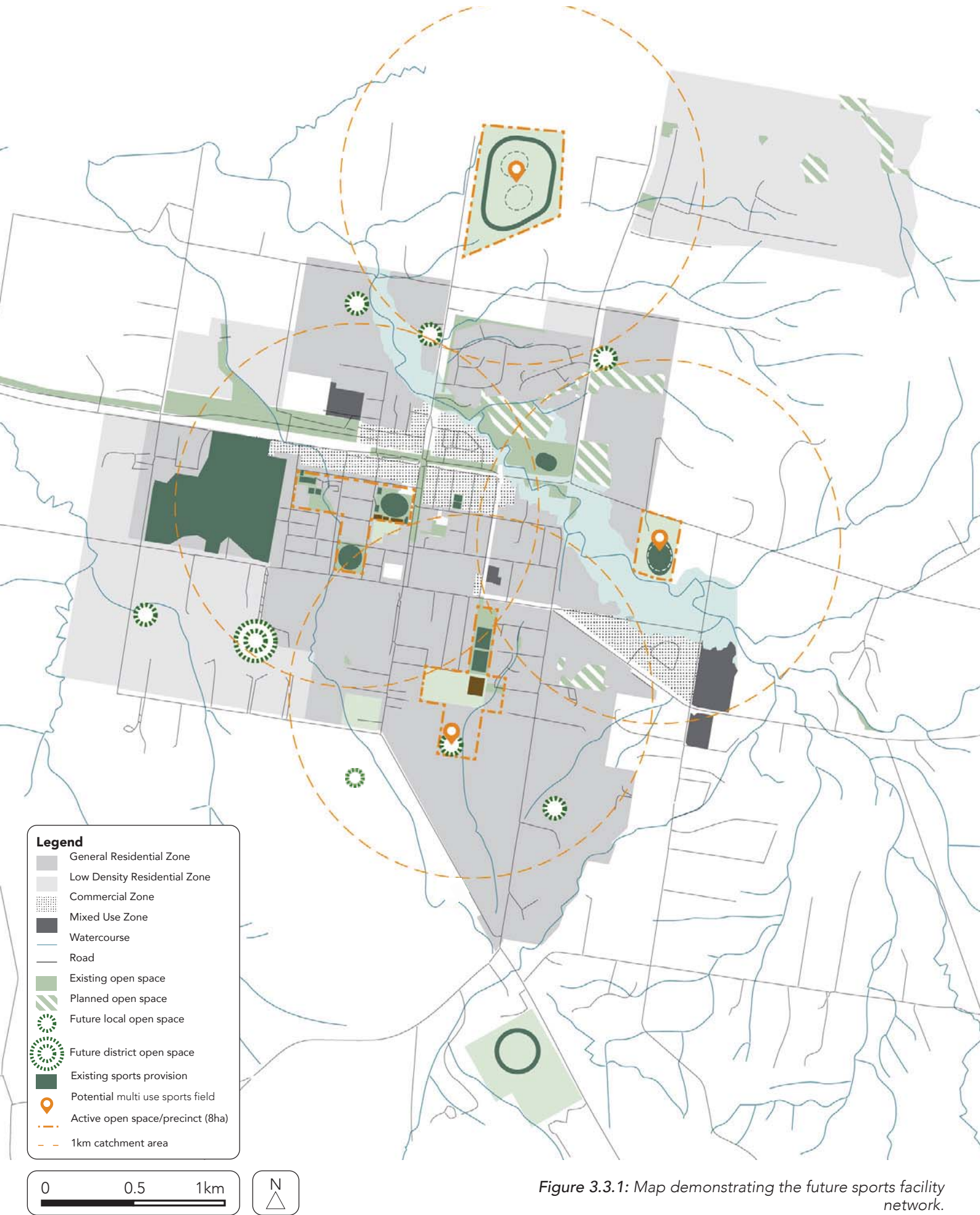


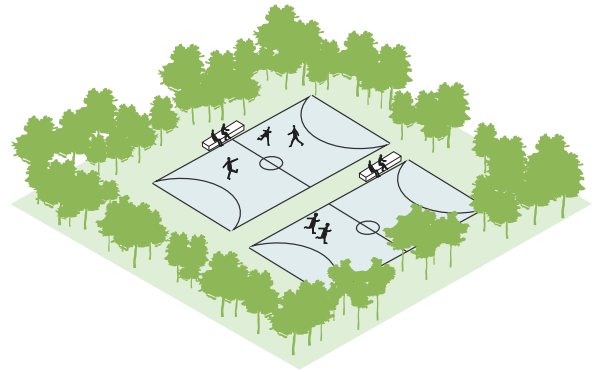
Figure 3.3.1: Map demonstrating the future sports facility network.



3.3 IMPROVING THE ACTIVE RECREATION OF OPEN SPACE – SPORT

Open space will offer a diversity of safe and attractive sporting opportunities that are accessible, are well distributed and cater to the various needs of the community regardless of their socio-economic status, ethnicity, age, gender, ability or geographic location.

The provision of sporting facilities should follow the Mansfield Shire Sport and Recreation Strategy, 2014.



ACTIONS

3.3.1 Diversify the sports and recreation facilities in district open space to broaden their appeal and use (referencing Mansfield Shire Sport and Recreation Strategy, 2014).

3.3.2 Partner with the Mansfield Racecourse and Showgrounds to explore opportunities to provide additional sport and recreation opportunities.

3.3.3 Collaborate with the Mansfield Secondary College to create a sport and recreation precinct around the school with the potential to expand to the south.

3.3.4 Establish Lords Reserve, Mansfield Recreation Reserve and the Tennis Centre as a holistic sports precinct by improving active transport links and connective elements between them.

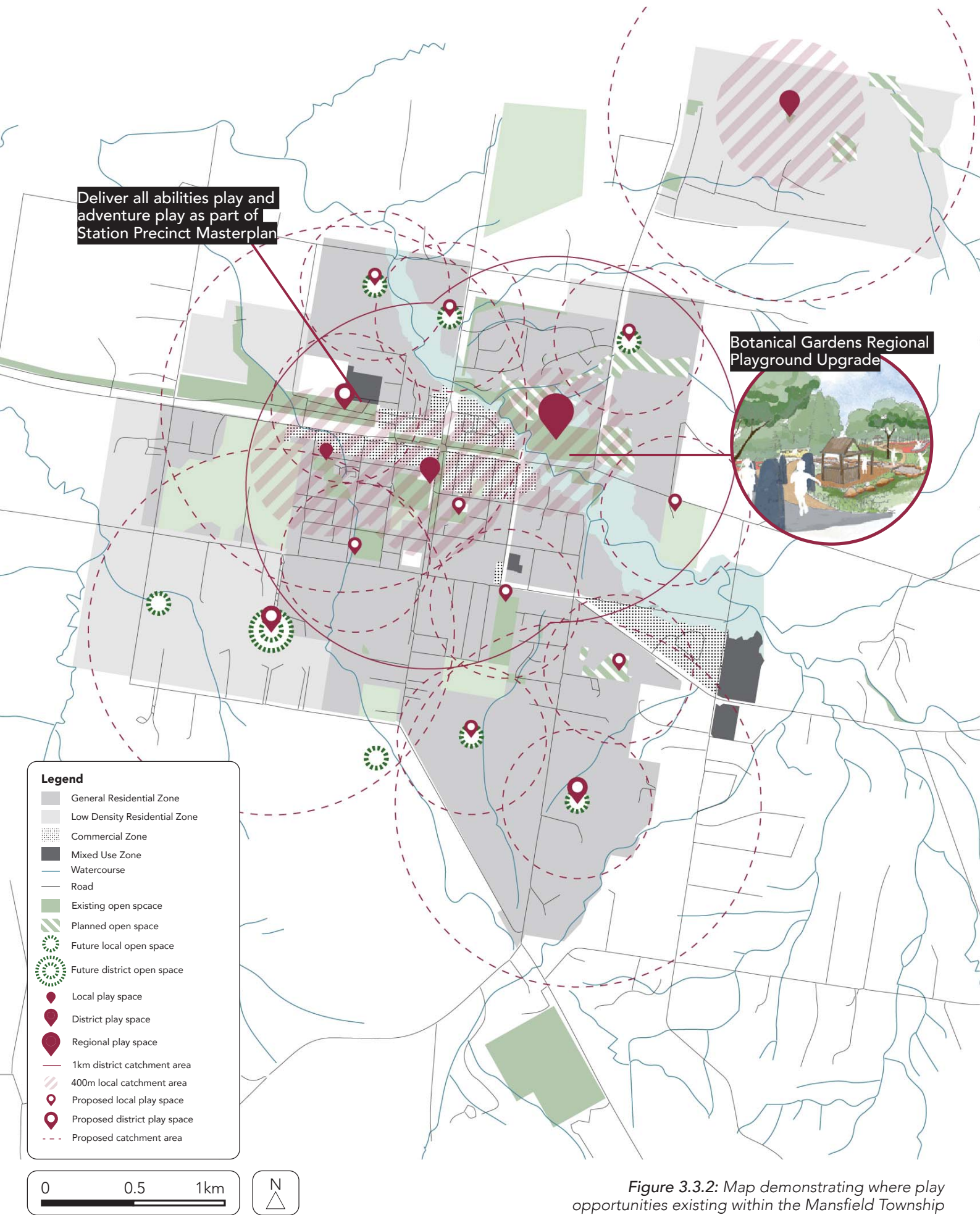


Figure 3.3.2: Map demonstrating where play opportunities existing within the Mansfield Township



IMPROVING THE ACTIVE RECREATION OF OPEN SPACE – PLAY

Open space will offer place based play opportunities that may range from informal and incidental play opportunities to play spaces that may have appeal at a regional level.

All play spaces should be place based and therefore reference their surroundings in form and materiality, such as nature themes/nature play.

The playspace network should be safe and cater to the various needs of the community regardless of their socio-economic status, ethnicity, age, gender, ability or geographic location, offering a diversity of references and typologies.



ACTIONS

3.3.5 Implement nine new local play opportunities in open spaces within general residential and mixed-use zones.

3.3.6 Implement three new play spaces to ensure all district open spaces have play facilities. One of these is to be located within the Station precinct area as per the Station Precinct Masterplan.

3.3.7 Continue to ensure that the Botanical Gardens regional play space meets the needs of the broader community and visitors.

3.3.8 Prioritise new play opportunities at existing community facilities such as Additional Oval and Lords Reserve.

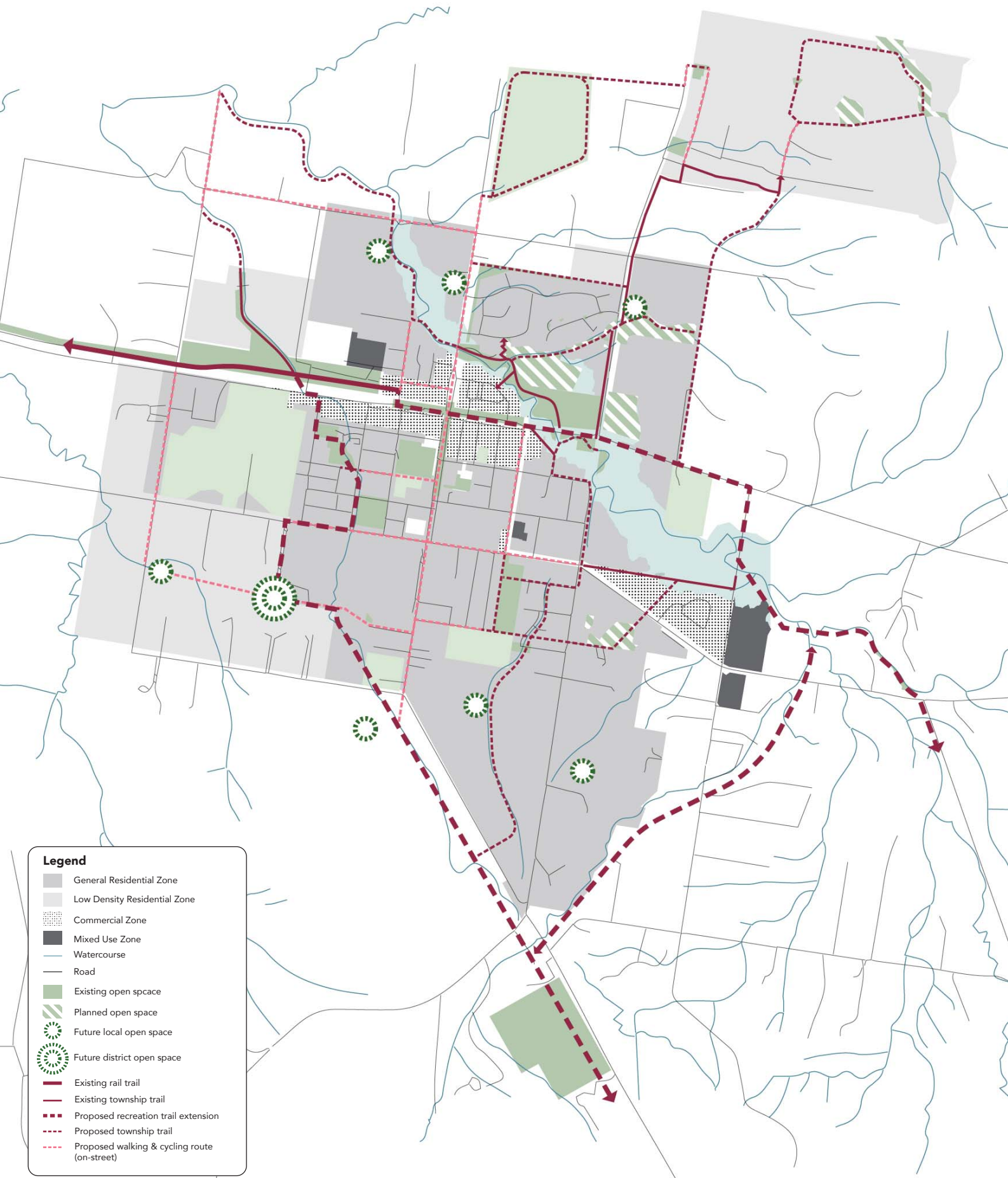


Figure 3.3.3: Map demonstrating opportunities to improve and expand the active transport path network.

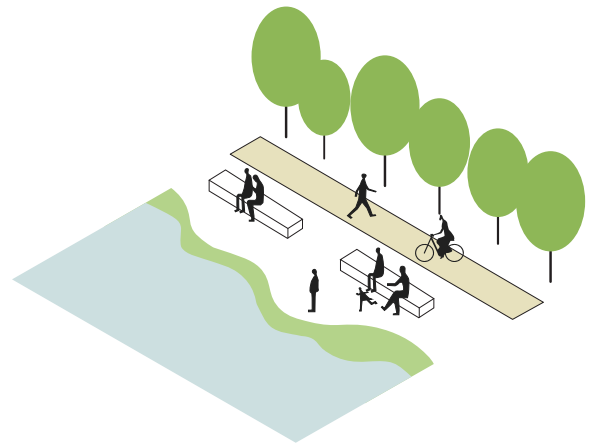




IMPROVING THE ACTIVE RECREATION OF OPEN SPACE – PATH NETWORK

Open space is best utilized when it is connected to the community via a safe slow movement network that caters for walking, running and cycling. A high level of connectivity to/from and within open space reserves enhances walkability of the townships and supports the uptake of walking and cycling and informal physical activity participation.

This strategy will also support Mansfield's reputation as a cycling destination by developing a network of trails.



ACTIONS

- 3.3.8 Establish two shared use paths as extensions to the Great Victorian Rail Trail that traverse the township from the Station Precinct to Rifle Butts Reserve and Mansfield-Woods Point Road respectively.
- 3.3.9 Utilize all opportunities to link open space with shared use paths via drainage lines.
- 3.3.10 Prioritize quality walking and cycling routes along Active Streets including Highett Street, Malcolm Street, Minerva Street, Stoneleigh Road, Kidston Parade, Chenery Street, Early Street, Kitchen Street, Dead Horse Lane and the Midland Highway to the Mansfield Racecourse.

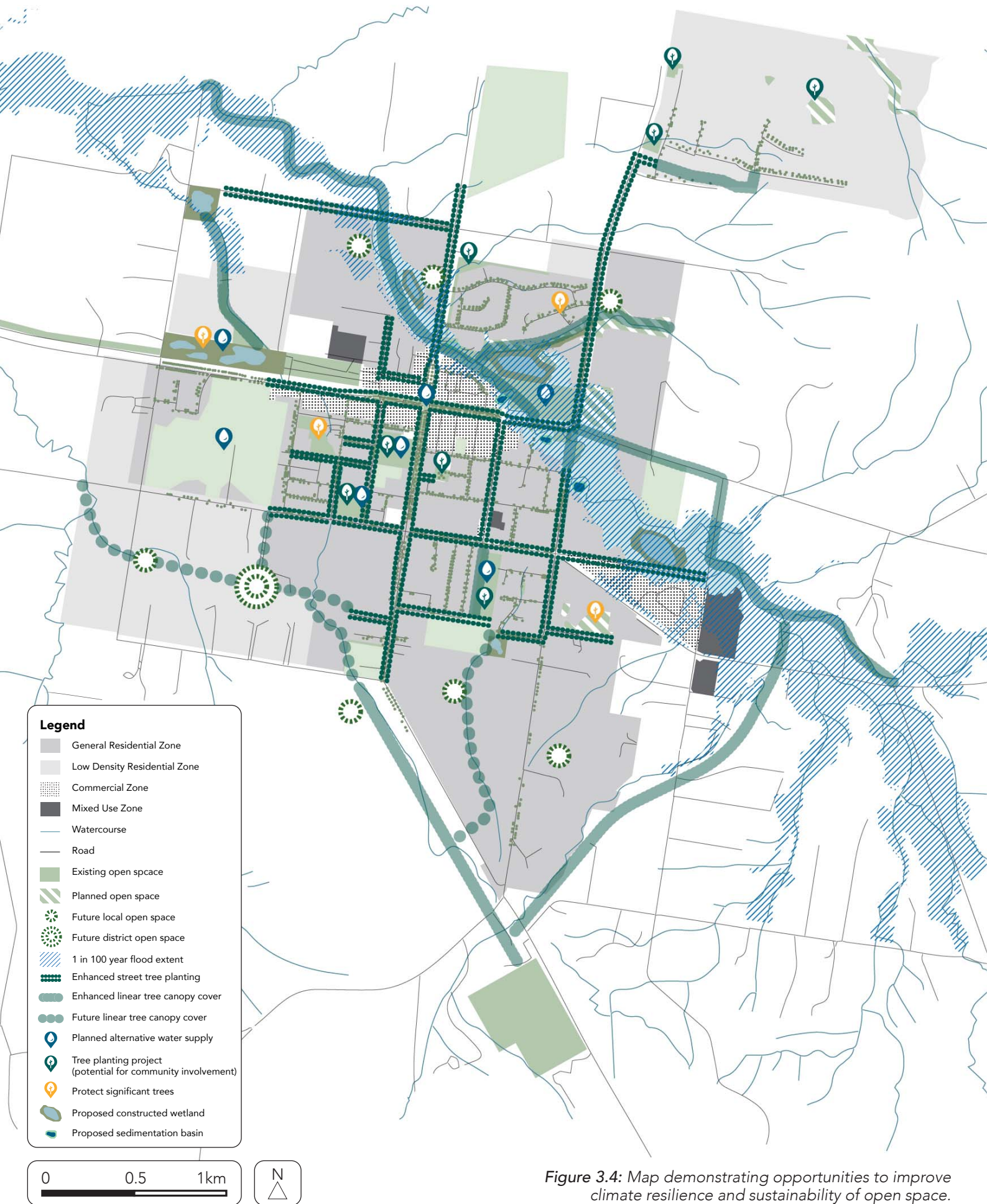


Figure 3.4: Map demonstrating opportunities to improve climate resilience and sustainability of open space.



3.4 IMPROVING THE CLIMATE RESILIENCE AND SUSTAINABILITY OF OPEN SPACE

Climate change presents several challenges for open space like water scarcity, flooding, bushfire and heat waves. The Strategy will improve open space resilience to future climate scenarios and support the community during climate emergencies.

Improving sustainability In line with Council objectives, the planning, provision, design and management of open space are underpinned by principles of sustainability and resilience.



ACTIONS

- 3.4.1 Introduce alternative water supply systems for Sports fields to work towards the sustainable water management objective within the Mansfield Environment Strategy (2019).
- 3.4.2 Protect and manage significant trees in line with industry best practice including trees within the Mullum Wetlands, Tennis centre drainage link, Red Gum Drive reserves and Highton Lane Reserve.
- 3.4.3 Establish passively irrigated and connected urban, biodiverse and deciduous, tree canopy along future and existing shared use path trail network.
- 3.4.4 Create a healthy waterway corridor with integrated habitat planting along Ford Creek in line with the Mansfield IWM Plan (2019).
- 3.4.5 Integrate passive irrigation for street trees along key Active Streets, taking advantage of regular street upgrade works as part of routine maintenance or renewal. Streets include Highbett Street, Malcolm Street, Minerva Street, Stoneleigh Road, Kidston Parade, Chenery Street, Early Street, Kitchen Street, Dead Horse Lane and the Midland Highway to the Mansfield Racecourse.
- 3.4.6 Increase canopy cover in open space, prioritising Daview Street Reserve, Additional Playing Fields, Midland Highway Drainage Reserve, Oaksford Drive Detention Basin, Grange Estate Stormwater Basin and Donovans Way Reserve with tree species selected for a future climate condition. Encourage community participation through community tree planting days.

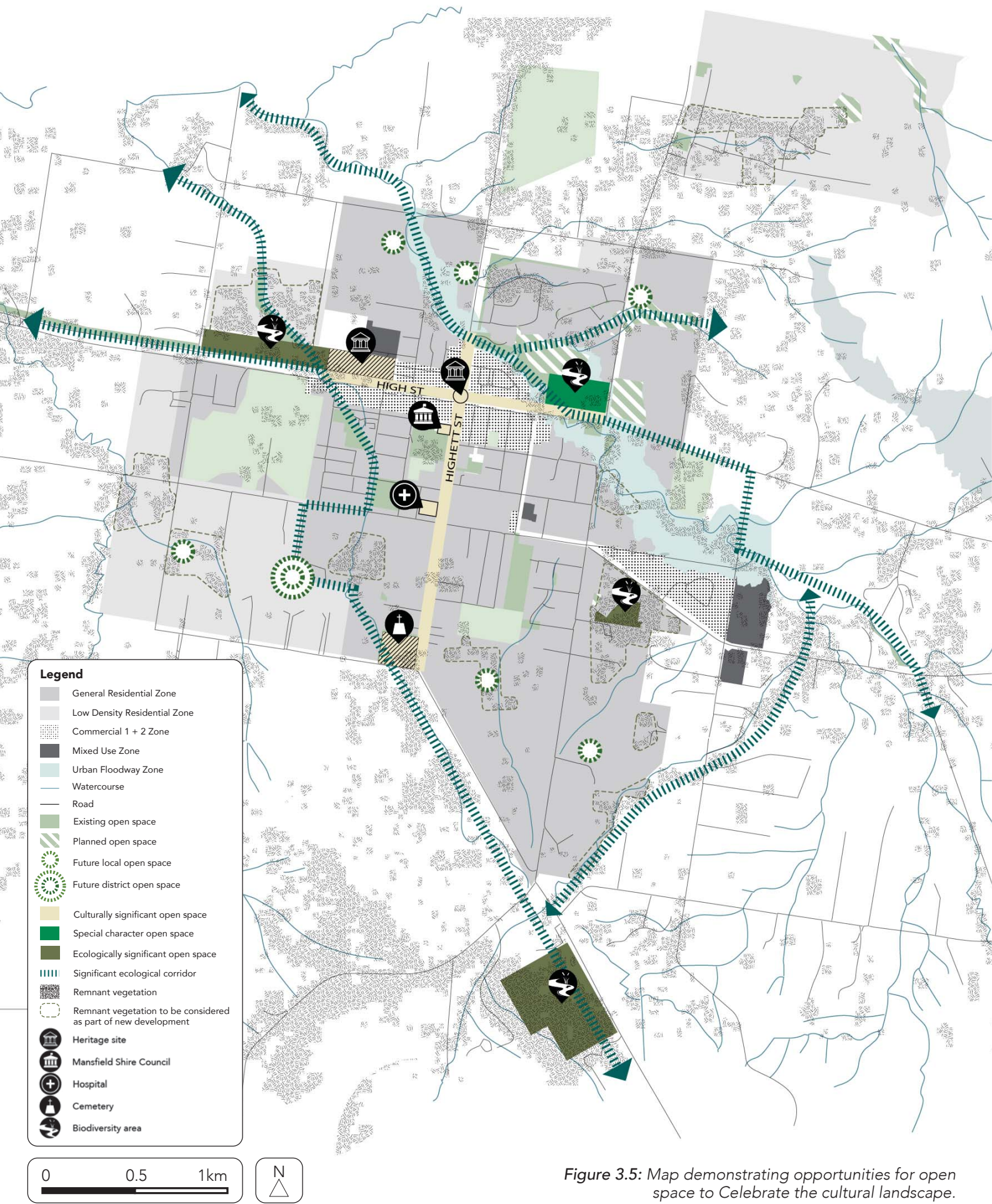
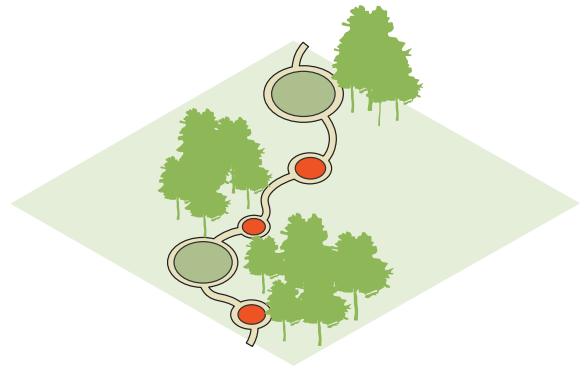


Figure 3.5: Map demonstrating opportunities for open space to Celebrate the cultural landscape.



3.5 CELEBRATING THE CULTURAL LANDSCAPE IN OPEN SPACE

Mansfield Township sits within a unique landscape dominated by pastures and paddock trees, surrounded by woodlands and forest. This relatively recent landscape character is integral to the identity of this rural community but sits within an ancient living cultural landscape of the Taungurung People. The Strategy will protect and enhance these layers of landscape and culture to strengthen the townships identity and values, whilst celebrating the areas rich history.



ACTIONS

- 3.5.1 Plan, design and manage open space in line with the Taungurung Country Plan.
- 3.5.2 Improve biodiversity values in open space along the creek corridors, including Ford Creek.
- 3.5.3 Support the delivery of the Mansfield Station Precinct Activation Project.
- 3.5.4 Maintain and enhance High and Highett Streets as the towns spine that connects people, commerce and key cultural assets.
- 3.5.5 Protect and enhance native habitat areas in open space especially in ecologically significant open space including Rifle Butts Reserve, Highton Lane Reserve, Mullum Wetlands and the Mansfield Botanic Park,
- 3.5.6 Protect significant trees in new and existing open space and facilitate natural regeneration and habitat creation.
- 3.5.7 Support cultural expression and diversity through the use of public art, nature play, festivals, community gatherings and associated uses in open space.
- 3.5.8 Protect and enhance environmental biodiversity
- 3.5.9 Maintain the landscape to minimise the potential for bushfire hazards

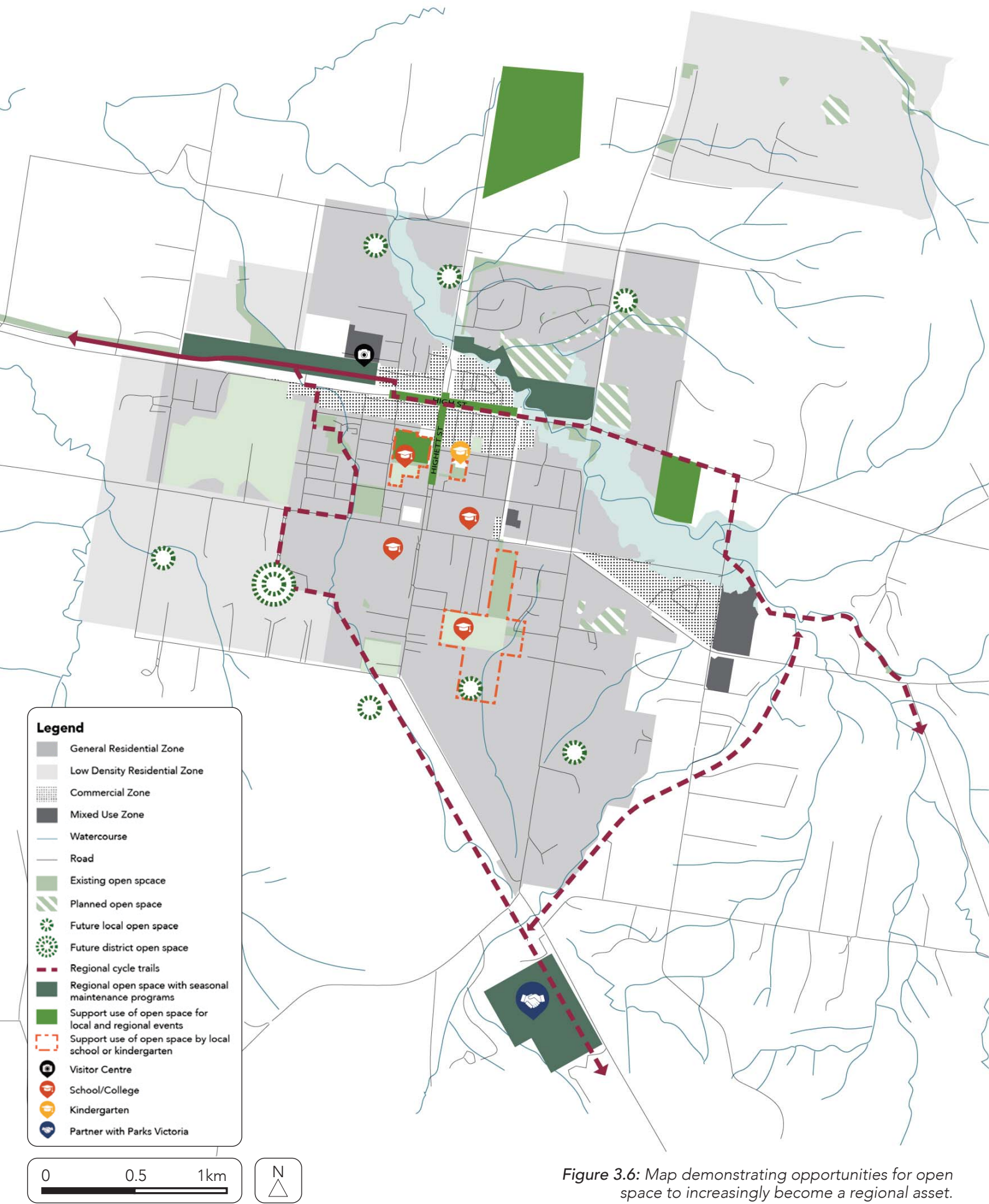
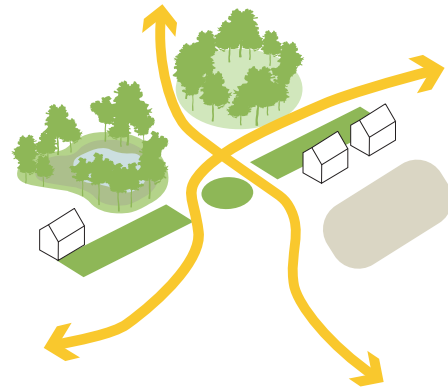


Figure 3.6: Map demonstrating opportunities for open space to increasingly become a regional asset.



3.6 SUPPORTING OPEN SPACE AS A REGIONAL ASSET

Open space has the ability to attract new residents given the lifestyle implications and support tourism industries and facilitate events. This makes open space a valuable contributor to the region's growing economy. Mansfield Township has several high value ancillary open spaces that play a special role in this regard. For example, High Street and its generous median strip is the spine of the town and plays an invaluable open space role although not public open space.



ACTIONS

- 3.6.1 Work with the Mansfield District Racing Club and Agricultural & Pastoral Society to maintain the Mansfield Racecourse and Showgrounds for wider community access and amenity.
- 3.6.2 Maintain High and Highett Streets as valuable restricted open space including for regional events.
- 3.6.3 Work with Parks Victoria and park user groups to protect and enhance Riffle Butts Reserve for community use and ecological value.
- 3.6.4 Improve connections between the Mansfield Botanic Gardens and High Street to remove limited access areas.
- 3.6.5 Establish two shared use paths as extensions to the Great Victorian Rail Trail that traverse the township from the Station Precinct to Rifle Butts Reserve and Mansfield-Woods Point Road respectively. Work in collaboration with schools and local environmental groups to develop nearby open space and explore potential for wider community use of school grounds outside of hours.
- 3.6.6 Promote environmental education and active lifestyle choices in open space by partnering with local schools.
- 3.6.7 Support the calendar of community events across the open space network.

4.0 Implementation Framework

Refer. No.	Action Breakdown	Time Frame	Funding Stream
3.1.1	Prepare and implement landscape master plans for all current Regional Open Space	2021-2025	Capital Works
3.1.2	Prepare and implement landscape concept plans for;		
	- Davies Street Reserve	2021-2025	Capital Works
	- Cummins Reserve Waterway	2021-2025	Capital Works
	- Mitchell Court Drainage Reserve	2026-2030	Capital Works
	- Grange Estate Playground.	2026-2030	Capital Works
3.1.3	Partner with management committees and managers to explore opportunities for improved access and use of open space by the broader community, including;		
	- Mansfield Tennis Centre	2021-2040	Grant
	- Mansfield Secondary College.	2021-2040	Grant
3.1.4	Support community groups who contribute to the maintenance of;		
	- Fords Creek	2021-2040	Grant and Capital Works
	- Mansfield Botanic Park	2021-2040	Capital Works
	- Mullum Wetlands.	2021-2040	Grant
3.1.5	Upgrade open space facilities for;		
	- Lords Reserve	2021-2040	Grant
	- Additional Playing Fields	2021-2040	Capital Works
	- Grange Estate Stormwater Basin	2021-2040	Capital Works
	- Midland Highway Drainage Reserve	2021-2040	Capital Works
	- Oaksford Drive Detention Basin.	2021-2040	Capital Works
3.1.6	Improve pedestrian and vehicular access and circulation within Mansfield Recreation Reserve.	2021-2025	Grant
3.1.7	Support the delivery of the Mansfield Station	2021-2030	Grant
3.2.1	Provide seven new local open spaces to meet the health and well being needs of the community as the township grows.	2021-2040 in response to development	Development Contribution
3.2.2	Provide new district open spaces to meet the unstructured recreation needs of the community, including;		
	- Open space proposed at 26 Highton Lane	2021-2025	Development Contribution
	- Open space proposed south west of Township	2021-2040 in response to development	Development Contribution
3.2.3	Mansfield Botanic Park to be expanded to the north to include unencumbered and encumbered open space from adjoining subdivision development.	2021-2025	Development Contribution



3.2.4	Establish continuous open space corridors along creek lines and drainage lines including;		
	- Rifle Butts Reserve to Dead Horse Lane	2021-2025 northern end and 2026-2030 southern end	Capital Works
	- Mansfield-Woods Point Road to Dead Horse Lane along Ford Creek	2021-2025	Capital Works
	- Minor corridors.	2021-2040 in response to development	Development Contribution
3.2.5	Co-locate public open space and encumbered land to provide co-benefits including drainage assets, significant tree protection zones and native habitat areas.	2021-2040 in response to development	Development Contribution
3.3.1	Diversify the sports and recreation facilities in district open space, including;		
	- Lords Reserve	2021-2030	Grant
	- Additional Playing Fields	2021-2030	Capital Works
	- Mansfield Recreation Reserve	2021-2030	Grant
	- Cummins Reserve (Tennis centre)	2021-2030	Grant
	- Proposed open space co-located with Stockman's Rise Drainage Reserve	2021-2030	Development Contribution
	- The Station Precinct	2021-2030	Grant
3.3.2	Partner to provide additional sport and recreation opportunities;		
	- Agricultural & Pastoral Society at the Showgrounds	2030-2040	Grant
	- Mansfield District Racing Club at the Racecourse	2026-2030	Grant
3.3.3	Work with the Mansfield Secondary College to create a sport and recreation precinct with a potential expansion to the south.	2021-2025	Capital Works and Development Contribution
3.3.4	Establish Lords Reserve, Mansfield Recreation Reserve and the Tennis Centre as a holistic sports precinct by improving active transport links and connective elements between them.	2021-2030	Capital Works
3.3.5	Deliver new local play opportunities		
	- Stockman's Rise Drainage Reserve east and west, Mansfield-Whitfield Road east and Monkey Gully Road east	2021-2040 in response to development	Development Contribution
	- Open space proposed at 26 Highton Lane	2021-2025	Development Contribution
	- Lords Reserve	2025-2030	Grant
	- Additional Playing Fields	2021-2025	Capital Works
	- Davies Street Reserve	2025-2030	Capital Works
	- Mansfield Showgrounds	2030-2040	Grant

3.3.6	Deliver new district play spaces		
	- Two play spaces proposed south west and south east of Township	2021-2040 in response to development	Development Contribution
	- The Station Precinct	2021-2030	Grant
3.3.7	Continue to ensure that the Botanical Gardens regional play space to meet the needs of the broader community and visitors.	2021-2025	Capital Works
3.3.8	Establish shared use paths as extensions to the Great Victorian Rail Trail that traverse the township, including		
	- Station Precinct to Rifle Butts Reserve	2021-2025 northern end and 2026-2030 southern end	Capital Works
	- Station Precinct to Mansfield-Woods Point Road	2021-2025	Capital Works
3.3.9	Utilize all opportunities to link open space with shared use paths via drainage lines.	2021-2040	Capital Works and Development Contribution
3.3.10	Prioritize quality walking and cycling routes along Active Streets including Highett Street, Malcolm Street, Minerva Street, Stoneleigh Road, Kidston Parade, Chenery Street, Early Street, Kitchen Street, Dead Horse Lane and the Midland Highway to the Mansfield Racecourse.	2021-2040	Capital Works and Development Contribution
3.4.1	Introduce alternative water supply systems for Sports fields to work towards the sustainable water management objective within the Mansfield Environment Strategy (2019).		
	- Lords Reserve	2021-2030	Grant
	- Mansfield Recreation Reserve	2021-2030	Grant
	- Additional Playing Fields	2021-2030	Capital Works
	- Mansfield Botanic Park	2021-2030	Capital Works
3.4.2	Protect and manage significant trees in line with industry best practice including trees within the Mullum Wetlands, Tennis centre drainage link, Red Gum Drive reserves and Highton Lane Reserve.	2021-2040	n/a
3.4.3	Establish passively irrigated and connected urban tree canopy along future and existing shared use path trail network.	2021-2040	Grant and Capital Works
3.4.4	Create a healthy waterway corridor with integrated habitat planting along Ford Creek in line with the Mansfield IWM Plan (2019).	2021-2040	Grant and Capital Works
3.4.5	Integrate passive irrigation for street trees along key Active Streets, taking advantage of regular street upgrade works as part of routine maintenance or renewal. Streets include Highett Street, Malcolm Street, Minerva Street, Stoneleigh Road, Kidston Parade, Chenery Street, Early Street, Kitchen Street, Dead Horse Lane and the Midland Highway to the Mansfield Racecourse.	2021-2040	Capital Works
3.4.6	Increase canopy cover in open space;		
	- Davie Street Reserve	2021-2025	Capital Works
	- Additional Playing Fields	2021-2025	Capital Works
	- Midland Highway Drainage Reserve	2021-2025	Capital Works
	- Oaksford Drive Detention Basin,	2026-2030	Capital Works
	- Grange Estate Stormwater Basin	2026-2030	Capital Works
	- Donovans Way Reserve	2026-2030	Capital Works



3.5.1	Plan, design and manage open space in line with the Taungurung Country Plan.	2021-2040	Development Contribution, Grant and Capital Works
3.5.2	Improve biodiversity values in open space along the creek corridors, including Ford Creek.	2021-2040	Grant and Capital Works
3.5.3	Support the delivery of the Mansfield Station Precinct Activation Project.	2021-2040	Grant
3.5.4	Maintain and enhance High and Highett Streets as the towns spine that connects people, commerce and key cultural assets.	2021-2040	Capital Works
3.5.5	Protect and enhance native habitat areas in open space especially in ecologically significant open space including;		
	- Rifle Butts Reserve	2021-2040	Grant
	- 26 Highton Lane Reserve	2021-2026	Development Contribution
	- Mullum Wetlands	2021-2040	Grant
	- Mansfield Botanic Park	2021-2040	Capital Works
3.5.6	Protect significant trees in new and existing open space and facilitate natural regeneration and habitat creation.	2021-2040	Development Contribution, Grant and Capital Works
3.5.7	Support cultural expression and diversity through the use of public art, nature play, festivals, community gatherings and associated uses in open space.	2021-2040	Development Contribution, Grant and Capital Works
3.6.1	Work with the Mansfield District Racing Club and Agricultural & Pastoral Society to maintain the Mansfield Racecourse and Showgrounds for wider community access and amenity.	2021-2040	Grant
3.6.2	Maintain High and Highett Streets as valuable restricted open space including for regional events.	2021-2040	Grant
3.6.3	Work with Parks Victoria and park user groups to protect and enhance Riffle Butts Reserve for community use and ecological value.	2021-2040	Grant
3.6.4	Improve connections between the Mansfield Botanic Gardens and High Street to remove limited access areas.	2021-2026	Capital Works
3.6.5	Work in collaboration with schools and local environmental groups to develop nearby open space and explore potential for wider community use of school grounds outside of hours.	2021-2026	Grant
3.6.6	Promote environmental education and active lifestyle choices in open space by partnering with local schools.	2021-2040	Grant
3.6.7	Support the calendar of community events across the open space network.	2021-2040	Grant and Capital Works

REALMstudios

city making + liveability

REALMstudios Pty Ltd
ABN 39165483330

enquiries@realmstudios.com

www.REALMstudios.com

Sydney

Level 4, 68 Wentworth Avenue,
Surry Hills, 2010
T +61 (0) 414 369 262
tom.rivard@realmstudios.com

Melbourne

Ground floor, 79-81 Coppin Street
Richmond, Vic 3121
T +61 3 9070 1157
jon.shinkfield@realmstudios.com
M +61 411 551 512

Perth

L2, Commonwealth Bank Building
242 Murray Street, Perth WA 6000
T +61 8 9227 7222
damien.pericles@realmstudios.com
M +61 456 714 655